



BOREAL BPI 00
Printing support



ANATOLE Titanium 98
Print pattern



Printing support **BOREAL BPI 00** Print pattern **ANATOLE Titanium 98**

Dimout support for digital printing

Technical properties



Flame retardant



Thermal



Acoustic

Applications Roman blinds - Valences - Lining - Bed runners - Curtains

Composition 100% FR polyester

Weight 260 g/m²

Width 280 cm

Fabric direction Room High Direction

Fitting ↔ cm ↓ cm

Maintenance advice     

Label OEKO-TEX STANDARD 100

Minimum order 25 linear(s) meter(s)

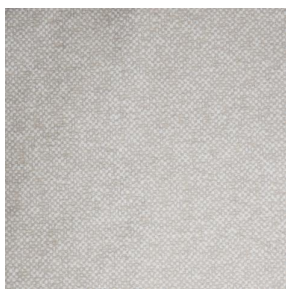


Visual not taking into account the printing medium, the final rendering may vary according to the chosen medium.

Technical characteristics

Flame retardant	M1 / B1 / IMO PASS / UNI 8456 / 9174 Classe Uno	
Acoustic	Noise reduction coefficient (NRC) : 0.88	
Resilience	Dimensional Stability (%)	
	Warp	0
	Weft	0
	Breaking Elongation	
	Warp	17
	Weft	27
	Breaking load (daN)	
	Warp	87
Weft	110	

Print pattern ANATOLE



ANATOLE Naturel 26



ANATOLE lin 11



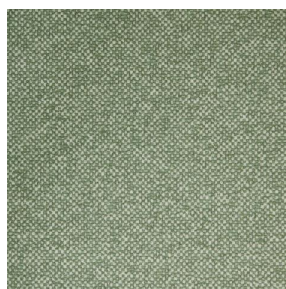
ANATOLE Ficelle 09



ANATOLE Celadon 135



ANATOLE Océan 91



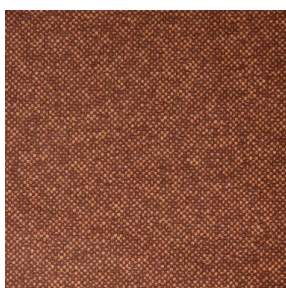
ANATOLE Cactus 36



ANATOLE mousse 92



ANATOLE Or 94



ANATOLE Chaudron
118



ANATOLE Amarante
108



ANATOLE Taupe 95



(Headquarters) SOTEXPRO - 510 route de Montchal - 42360 PANISSIÈRES - FRANCE - +33 4 77 27 60 60
(Showroom) Le LAB' SOTEXPRO - 4 rue du Mail - 75002 PARIS - FRANCE

Non-contractual photos and colors - Indicative fitting - Fitting may vary depending on support selected