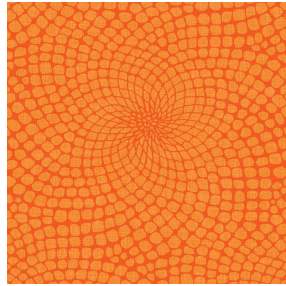




BOREAL BPI 00
Printing support



MELODY Orange 15
Print pattern



Printing support **BOREAL BPI 00** Print pattern **MELODY Orange 15**

Dimout support for digital printing

Technical properties



Flame retardant



Thermal



Acoustic

Applications Roman blinds - Valences - Lining - Bed runners - Curtains





Composition 100% FR polyester

Weight 260 g/m²

Width 280 cm

Fabric direction Room High Direction

Fitting ↔ 0.0 cm ↓ 0.0 cm

Maintenance advice     

Label OEKO-TEX STANDARD 100

Minimum order 25 linear(s) meter(s)

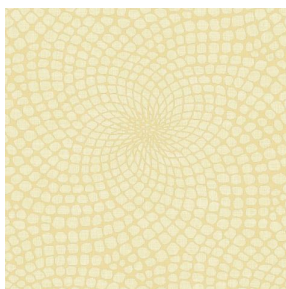


Visual not taking into account the printing medium, the final rendering may vary according to the chosen medium.

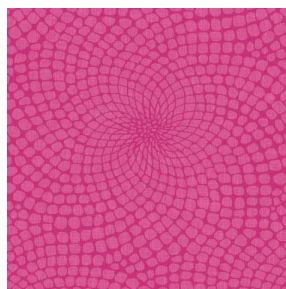
Technical characteristics

Flame retardant	M1 / B1 / IMO PASS / UNI 8456 / 9174 Classe Uno	
Acoustic	Noise reduction coefficient (NRC) : 0.88	
Resilience	Dimensional Stability (%)	
	Warp	0
	Weft	0
	Breaking Elongation	
	Warp	17
	Weft	27
	Breaking load (daN)	
	Warp	87
Weft	110	

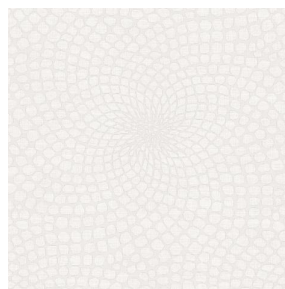
Print pattern MELODY



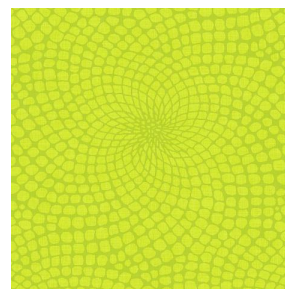
MELODY Vanille 51



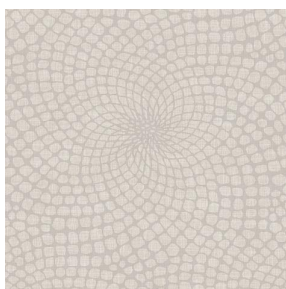
MELODY Fuchsia 33



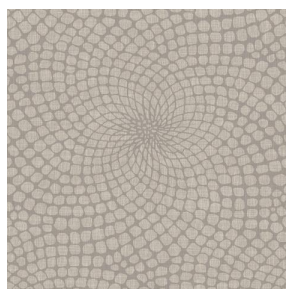
MELODY Naturel 26



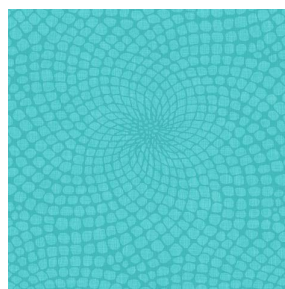
MELODY Anis 62



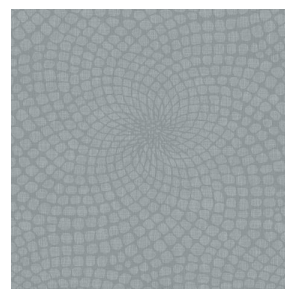
MELODY Lin 11



MELODY Ficelle 09



MELODY Turquoise 53



MELODY Acier 18



(Headquarters) SOTEXPRO - 510 route de Montchal - 42360 PANISSIÈRES - FRANCE - +33 4 77 27 60 60
(Showroom) Le LAB' SOTEXPRO - 4 rue du Mail - 75002 PARIS - FRANCE

Non-contractual photos and colors - Indicative fitting - Fitting may vary depending on support selected