



BOREAL BPI 00
Printing support



GUSTAVE Céladon 135
Print pattern



Printing support **BOREAL BPI 00** Print pattern **GUSTAVE Céladon 135**

Dimout support for digital printing

Technical properties



Flame retardant



Thermal



Acoustic

Applications Roman blinds - Valences - Lining - Bed runners - Curtains

Composition 100% FR polyester

Weight 260 g/m²

Width 280 cm

Fabric direction Room High Direction

Fitting ↔ 14.0 cm ↓ 0.0 cm

Maintenance advice     

Label OEKO-TEX STANDARD 100

Minimum order 25 linear(s) meter(s)

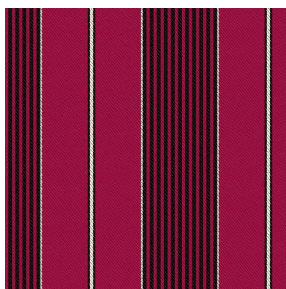


Visual not taking into account the printing medium, the final rendering may vary according to the chosen medium.

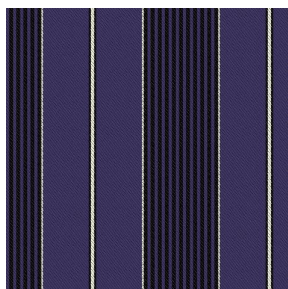
Technical characteristics

| | |
|-----------------|---|
| Flame retardant | M1 / B1 / IMO PASS / UNI 8456 / 9174 Classe Uno |
| Acoustic | Noise reduction coefficient (NRC) : 0.88 |
| Resilience | Dimensional Stability (%) |
| | Warp 0 |
| | Weft 0 |
| | Breaking Elongation |
| | Warp 17 |
| | Weft 27 |
| | Breaking load (daN) |
| | Warp 87 |
| | Weft 110 |

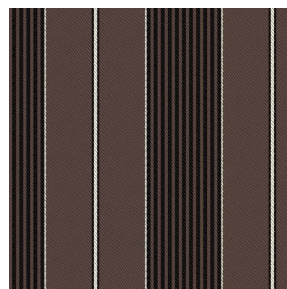
Print pattern GUSTAVE



GUSTAVE Rubis 59



GUSTAVE Prune 84



GUSTAVE Taupe 95



(Headquarters) SOTEXPRO - 510 route de Montchal - 42360 PANISSIÈRES - FRANCE - +33 4 77 27 60 60

Non-contractual photos and colors - Indicative fitting - Fitting may vary depending on support selected