



**BOREAL BPI 00**  
Printing support



**SONG Agrume 69**  
Print pattern



## Printing support **BOREAL BPI 00** Print pattern **SONG Agrume 69**

Dimout support for digital printing

### Technical properties



Flame retardant



Thermal



Acoustic

**Applications** Roman blinds - Valences - Lining - Bed runners - Curtains

**Composition** 100% FR polyester

**Weight** 260 g/m<sup>2</sup>

**Width** 280 cm

**Fabric direction** Room High Direction

**Fitting** ↔ 35.0 cm ↓ 35.0 cm

**Maintenance advice**     

**Label** OEKO-TEX STANDARD 100

**Minimum order** 25 linear(s) meter(s)



Visual not taking into account the printing medium, the final rendering may vary according to the chosen medium.

## Technical characteristics

Flame retardant	M1 / B1 / IMO PASS / UNI 8456 / 9174 Classe Uno	
Acoustic	Noise reduction coefficient (NRC) : <b>0.88</b>	
Resilience	Dimensional Stability (%)	
	Warp	<b>0</b>
	Weft	<b>0</b>
	Breaking Elongation	
	Warp	<b>17</b>
	Weft	<b>27</b>
	Breaking load (daN)	
	Warp	<b>87</b>
Weft	<b>110</b>	

# Print pattern SONG



SONG Opéra 104



SONG Framboise 81



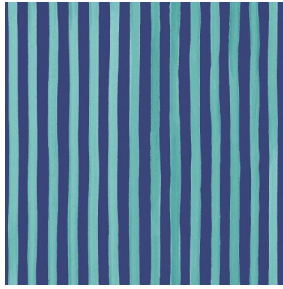
SONG Lierre 124



SONG Menthe 122



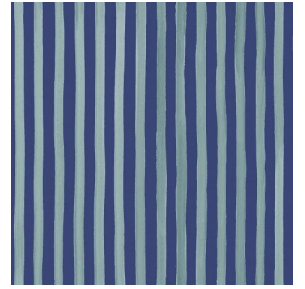
SONG Naturel 26



SONG Navy 120



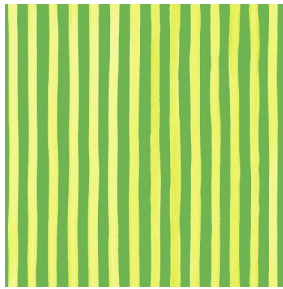
SONG Océan 91



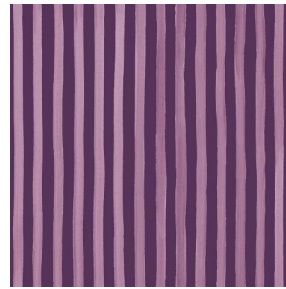
SONG Orage 123



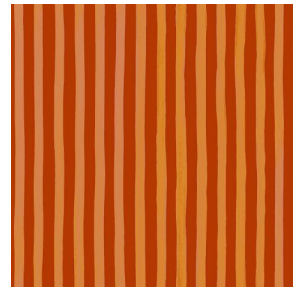
SONG Orange 15



SONG Prairie 125



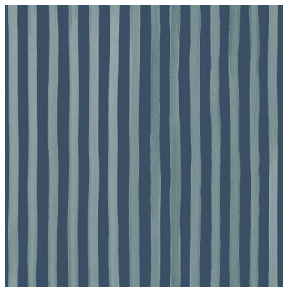
SONG Prune 84



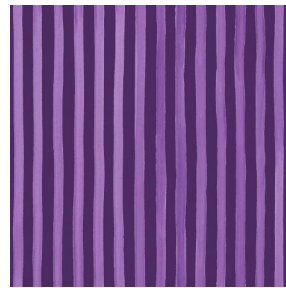
SONG Sanguine 05



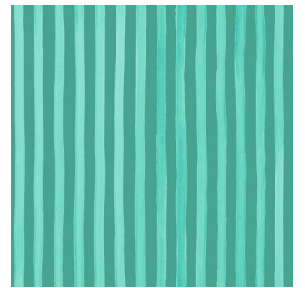
SONG Soleil 127



SONG Titanium 98



SONG Violine 105



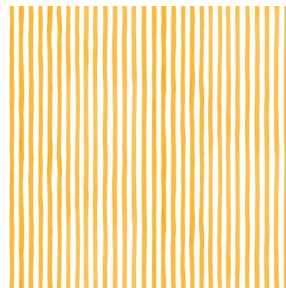
SONG Jade 116



SONG Sapin 126



SONG Tilleul 103



SONG maïs 37



sotexpro

(Headquarters) SOTEXPRO - 510 route de Montchal - 42360 PANISSIÈRES - FRANCE - +33 4 77 27 60 60  
(Showroom) Le LAB' SOTEXPRO - 4 rue du Mail - 75002 PARIS - FRANCE

Non-contractual photos and colors - Indicative fitting - Fitting may vary depending on support selected