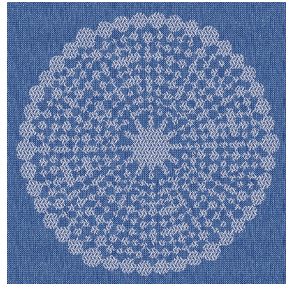


BORNEO BPI 00
Printing support



ANGELE Océan 91
Print pattern



Printing support **BORNEO BPI 00** Print pattern **ANGELE Océan 91**

Technical properties



Flame retardant



Thermal



Acoustic

Applications Roman blinds - Curtains

Composition 100% FR polyester

Weight 440 g/m²

Width 280 cm

Fabric direction Room high or standard direction

Fitting ↔ 30.0 cm ↓ 30.0 cm

Maintenance advice    

Label OEKO-TEX STANDARD 100

Minimum order 25 linear(s) meter(s)

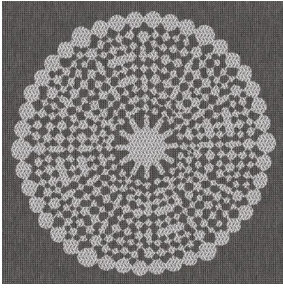


Visual not taking into account the printing medium, the final rendering may vary according to the chosen medium.

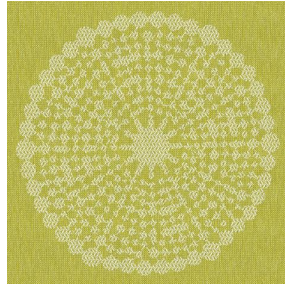
Technical characteristics

Flame retardant	M1 / B1 / IMO PASS / UNI 8456 / 9174 Classe Uno
Acoustic	Noise reduction coefficient (NRC) : 0.89
Optical index	Light reflexion : 60 %
	Light absorption : 40 %
	Light transmission : 0 %
Thermal index	Solar reflexion : 56 %
	Solar absorption : 44 %
	Solar transmission : 0 %
	UV transmission : 0 %
	Gtot : Gt 39 % Fc 65 %
Resilience	Lightfastness (units Class/8) 6
	Dimensional Stability (%)
	Warp -0.5
	Weft 0
	Breaking Elongation
	Warp 31
	Weft 0
	Breaking load (daN)
	Warp 130
Weft 250	

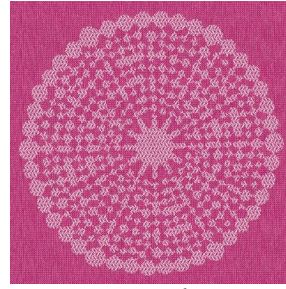
Print pattern ANGELE



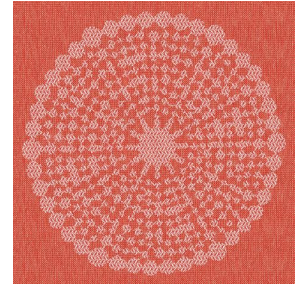
ANGELE Taupe 95



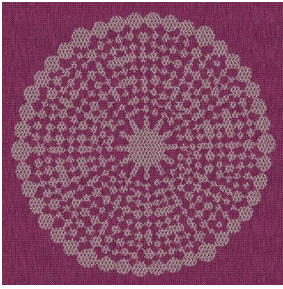
ANGELE Anis 62



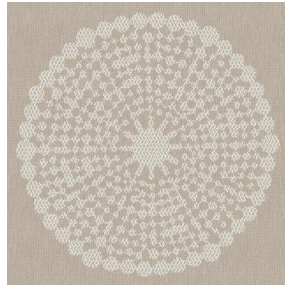
ANGELE Fuchsia 33



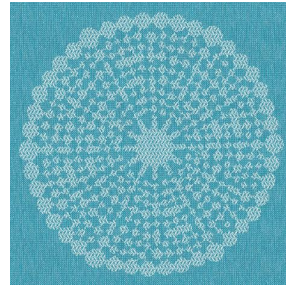
ANGELE Orange 15



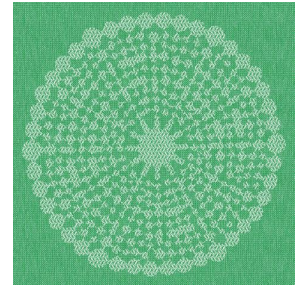
ANGELE Prune 84



ANGELE Sable 67



ANGELE Turquoise 53



ANGELE Vert 24



(Headquarters) SOTEXPRO - 510 route de Montchal - 42360 PANISSIÈRES - FRANCE - +33 4 77 27 60 60
(Showroom) Le LAB' SOTEXPRO - 4 rue du Mail - 75002 PARIS - FRANCE

Non-contractual photos and colors - Indicative fitting - Fitting may vary depending on support selected