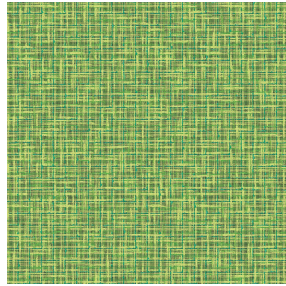




BORNEO BPI 00
Printing support



SALIN Anis 62
Print pattern



Printing support **BORNEO BPI 00** Print pattern **SALIN Anis 62**

Technical properties



Flame retardant



Thermal



Acoustic

Applications Roman blinds - Curtains

Composition 100% FR polyester

Weight 440 g/m²

Width 280 cm

Fabric direction Room high or standard direction

Fitting ↔ 0.0 cm ↓ 0.0 cm

Maintenance advice    

Label OEKO-TEX STANDARD 100

Minimum order 25 linear(s) meter(s)



Visual not taking into account the printing medium, the final rendering may vary according to the chosen medium.

Technical characteristics

Flame retardant	M1 / B1 / IMO PASS / UNI 8456 / 9174 Classe Uno
Acoustic	Noise reduction coefficient (NRC) : 0.89
Optical index	Light reflexion : 60 % Light absorption : 40 % Light transmission : 0 %
Thermal index	Solar reflexion : 56 % Solar absorption : 44 % Solar transmission : 0 % UV transmission : 0 % Gtot : Gt 39 % Fc 65 %
Resilience	Lightfastness (units Class/8) 6 Dimensional Stability (%) Warp -0.5 Weft 0 Breaking Elongation Warp 31 Weft 0 Breaking load (daN) Warp 130 Weft 250

Print pattern SALIN



SALIN Abricot 08



SALIN Fuchsia 33



SALIN Naturel 26



SALIN Océan 91



SALIN Orange 15



SALIN Rouge 21



SALIN Turquoise 53



SALIN Vert 24



(Headquarters) SOTEXPRO - 510 route de Montchal - 42360 PANISSIÈRES - FRANCE - +33 4 77 27 60 60
(Showroom) Le LAB' SOTEXPRO - 4 rue du Mail - 75002 PARIS - FRANCE

Non-contractual photos and colors - Indicative fitting - Fitting may vary depending on support selected