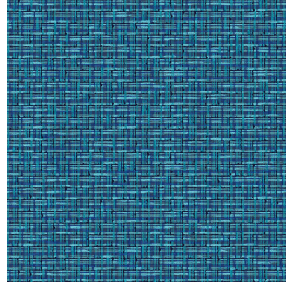




**BORNEO BPI 00**  
Printing support



**SALIN Océan 91**  
Print pattern



## Printing support **BORNEO BPI 00** Print pattern **SALIN Océan 91**

### Technical properties



Flame retardant



Thermal



Acoustic

**Applications** Roman blinds - Curtains

**Composition** 100% FR polyester

**Weight** 440 g/m<sup>2</sup>

**Width** 280 cm

**Fabric direction** Room high or standard direction

**Fitting** ↔ 0.0 cm ↓ 0.0 cm

**Maintenance advice**

**Label** OEKO-TEX STANDARD 100

**Minimum order** 25 linear(s) meter(s)



Visual not taking into account the printing medium, the final rendering may vary according to the chosen medium.

## Technical characteristics

|                 |   |
|-----------------|---|
| Flame retardant | M1 / B1 / IMO PASS / UNI 8456 / 9174 Classe Uno |
| Acoustic        | Noise reduction coefficient (NRC) : <b>0.89</b> |
| Optical index   | Light reflexion : <b>60 %</b>                   |
|                 | Light absorption : <b>40 %</b>                  |
|                 | Light transmission : <b>0 %</b>                 |
| Thermal index   | Solar reflexion : <b>56 %</b>                   |
|                 | Solar absorption : <b>44 %</b>                  |
|                 | Solar transmission : <b>0 %</b>                 |
|                 | UV transmission : <b>0 %</b>                    |
|                 | Gtot : <b>Gt 39 % Fc 65 %</b>                   |
|                 | Resilience                                      |
|                 | Dimensional Stability (%)                       |
|                 | Warp <b>-0.5</b>                                |
|                 | Weft <b>0</b>                                   |
|                 | Breaking Elongation                             |
|                 | Warp <b>31</b>                                  |
|                 | Weft <b>0</b>                                   |
|                 | Breaking load (daN)                             |
|                 | Warp <b>130</b>                                 |
|                 | Weft <b>250</b>                                 |

# Print pattern SALIN



SALIN Abricot 08



SALIN Anis 62



SALIN Fuchsia 33



SALIN Naturel 26



SALIN Orange 15



SALIN Rouge 21



SALIN Turquoise 53



SALIN Vert 24



(Headquarters) SOTEXPRO - 510 route de Montchal - 42360 PANISSIÈRES - FRANCE - +33 4 77 27 60 60  
(Showroom) Le LAB' SOTEXPRO - 4 rue du Mail - 75002 PARIS - FRANCE

*Non-contractual photos and colors - Indicative fitting - Fitting may vary depending on support selected*