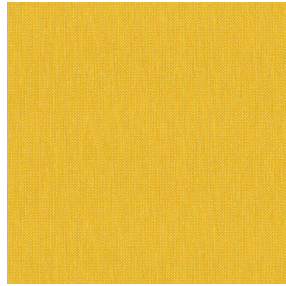




BORNEO BPI 00
Printing support



RIVE Jaune 46
Print pattern



Printing support **BORNEO BPI 00** Print pattern **RIVE Jaune 46**

Technical properties



Flame retardant



Thermal



Acoustic

Applications Roman blinds - Curtains

Composition 100% FR polyester

Weight 440 g/m²

Width 280 cm

Fabric direction Room high or standard direction

Fitting ↔ 0.0 cm ↓ 0.0 cm

Maintenance advice

Label OEKO-TEX STANDARD 100

Minimum order 25 linear(s) meter(s)



Visual not taking into account the printing medium, the final rendering may vary according to the chosen medium.

Technical characteristics

Flame retardant	M1 / B1 / IMO PASS / UNI 8456 / 9174 Classe Uno
Acoustic	Noise reduction coefficient (NRC) : 0.89
Optical index	Light reflexion : 60 %
	Light absorption : 40 %
	Light transmission : 0 %
Thermal index	Solar reflexion : 56 %
	Solar absorption : 44 %
	Solar transmission : 0 %
	UV transmission : 0 %
	Gtot : Gt 39 % Fc 65 %
	Resilience
	Dimensional Stability (%)
	Warp -0.5
	Weft 0
	Breaking Elongation
	Warp 31
	Weft 0
	Breaking load (daN)
	Warp 130
	Weft 250

Print pattern RIVE



RIVE Fuchsia 33



RIVE Bleu 41



RIVE Océan 91



RIVE Turquoise 53



RIVE Sable 67



RIVE Taupe 95



RIVE Gris 97



(Headquarters) SOTEXPRO - 510 route de Montchal - 42360 PANISSIÈRES - FRANCE - +33 4 77 27 60 60
(Showroom) Le LAB' SOTEXPRO - 4 rue du Mail - 75002 PARIS - FRANCE

Non-contractual photos and colors - Indicative fitting - Fitting may vary depending on support selected