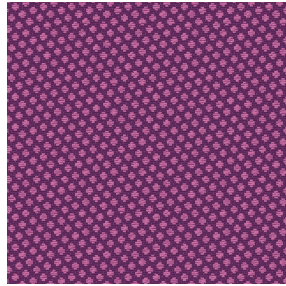




**BORNEO BPI 00**  
Printing support



**GONIDIE Vieux rose 64**  
Print pattern



## Printing support **BORNEO BPI 00** Print pattern **GONIDIE Vieux rose 64**

### Technical properties



Flame retardant



Thermal



Acoustic

**Applications** Roman blinds - Curtains

**Composition** 100% FR polyester

**Weight** 440 g/m<sup>2</sup>

**Width** 280 cm

**Fabric direction** Room high or standard direction

**Fitting** ↔ 0.0 cm ↓ 0.0 cm

**Maintenance advice**    

**Label** OEKO-TEX STANDARD 100

**Minimum order** 25 linear(s) meter(s)



Visual not taking into account the printing medium, the final rendering may vary according to the chosen medium.

## Technical characteristics

|                 |   |
|-----------------|---|
| Flame retardant | M1 / B1 / IMO PASS / UNI 8456 / 9174 Classe Uno |
| Acoustic        | Noise reduction coefficient (NRC) : <b>0.89</b> |
| Optical index   | Light reflexion : <b>60 %</b>                   |
|                 | Light absorption : <b>40 %</b>                  |
|                 | Light transmission : <b>0 %</b>                 |
| Thermal index   | Solar reflexion : <b>56 %</b>                   |
|                 | Solar absorption : <b>44 %</b>                  |
|                 | Solar transmission : <b>0 %</b>                 |
|                 | UV transmission : <b>0 %</b>                    |
|                 | Gtot : <b>Gt 39 % Fc 65 %</b>                   |
| Resilience      | Lightfastness (units Class/8) <b>6</b>          |
|                 | Dimensional Stability (%)                       |
|                 | Warp <b>-0.5</b>                                |
|                 | Weft <b>0</b>                                   |
|                 | Breaking Elongation                             |
|                 | Warp <b>31</b>                                  |
|                 | Weft <b>0</b>                                   |
|                 | Breaking load (daN)                             |
|                 | Warp <b>130</b>                                 |
| Weft <b>250</b> |   |

# Print pattern GONIDIE



GONIDIE Souris 31



GONIDIE Beige 63



GONIDIE Citrouille 136



GONIDIE Glacier 43



GONIDIE Noir 10



GONIDIE Céladon 135



GONIDIE Anis 62



GONIDIE Perle 96



GONIDIE Mousse 92



GONIDIE Tourterelle  
138



GONIDIE Brique 42



GONIDIE Opéra 104



GONIDIE Pacifique 54



GONIDIE Brun 23



GONIDIE Crème 32



GONIDIE Taupe 95



GONIDIE Lin 11



GONIDIE Lierre 124



GONIDIE Bergamote  
121



GONIDIE Hortensia 134



(Headquarters) SOTEXPRO - 510 route de Montchal - 42360 PANISSIÈRES - FRANCE - +33 4 77 27 60 60  
(Showroom) Le LAB' SOTEXPRO - 4 rue du Mail - 75002 PARIS - FRANCE

Non-contractual photos and colors - Indicative fitting - Fitting may vary depending on support selected

## Print pattern GONIDIE



GONIDIE Emeraude 88



GONIDIE Fuchsia 33



GONIDIE Ebene 113



GONIDIE Ficelle 09



(Headquarters) SOTEXPRO - 510 route de Montchal - 42360 PANISSIÈRES - FRANCE - +33 4 77 27 60 60  
(Showroom) Le LAB' SOTEXPRO - 4 rue du Mail - 75002 PARIS - FRANCE

Non-contractual photos and colors - Indicative fitting - Fitting may vary depending on support selected