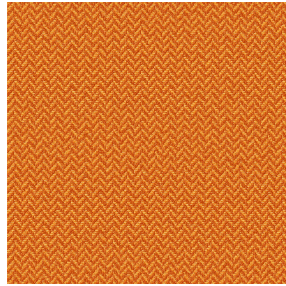




BORNEO BPI 00
Printing support



SCOURTIN Citrouille 136
Print pattern



Printing support **BORNEO BPI 00** Print pattern **SCOURTIN Citrouille 136**

Technical properties



Flame retardant



Thermal



Acoustic

Applications Roman blinds - Curtains

Composition 100% FR polyester

Weight 440 g/m²

Width 280 cm

Fabric direction Room high or standard direction

Fitting ← cm ↓ cm

Maintenance advice

Label OEKO-TEX STANDARD 100

Minimum order 25 linear(s) meter(s)



Visual not taking into account the printing medium, the final rendering may vary according to the chosen medium.

Technical characteristics

| | |
|-----------------|---|
| Flame retardant | M1 / B1 / IMO PASS / UNI 8456 / 9174 Classe Uno |
| Acoustic | Noise reduction coefficient (NRC) : 0.89 |
| Optical index | Light reflexion : 60 % |
| | Light absorption : 40 % |
| | Light transmission : 0 % |
| Thermal index | Solar reflexion : 56 % |
| | Solar absorption : 44 % |
| | Solar transmission : 0 % |
| | UV transmission : 0 % |
| | Gtot : Gt 39 % Fc 65 % |
| Resilience | Lightfastness (units Class/8) 6 |
| | Dimensional Stability (%) |
| | Warp -0.5 |
| | Weft 0 |
| | Breaking Elongation |
| | Warp 31 |
| | Weft 0 |
| | Breaking load (daN) |
| | Warp 130 |
| Weft 250 | |

Print pattern SCOURTIN



SCOURTIN Beige 63



SCOURTIN Fuchsia 33



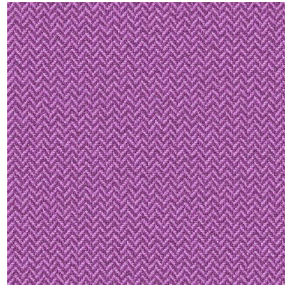
SCOURTIN Sapin 126



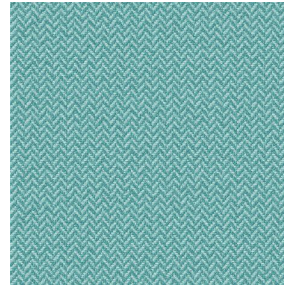
SCOURTIN Bergamote
121



SCOURTIN Anthracite
38



SCOURTIN Violine 105



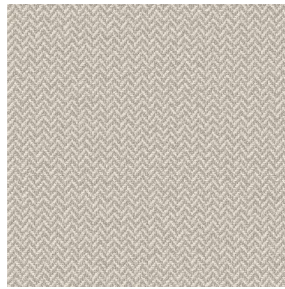
SCOURTIN Pacifique 54



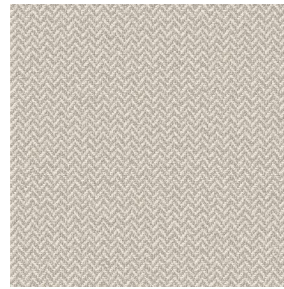
SCOURTIN Rose 129



SCOURTIN Blanc 01



SCOURTIN Lin 11



SCOURTIN Naturel 26



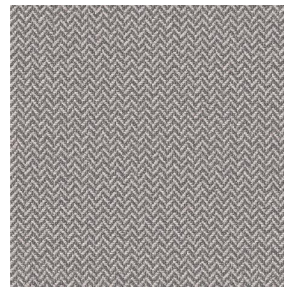
SCOURTIN Turquoise 53



SCOURTIN Brun 23



SCOURTIN Hortensia
134



SCOURTIN Orage 123



SCOURTIN Rubis 59



SCOURTIN Ficelle 09



SCOURTIN Maïs 37



SCOURTIN Céladon 135



SCOURTIN Ebene 113



(Headquarters) SOTEXPRO - 510 route de Montchal - 42360 PANISSIÈRES - FRANCE - +33 4 77 27 60 60
(Showroom) Le LAB' SOTEXPRO - 4 rue du Mail - 75002 PARIS - FRANCE

Non-contractual photos and colors - Indicative fitting - Fitting may vary depending on support selected

Print pattern SCOURTIN



SCOURTIN Tourterelle
138



SCOURTIN Titanium 98



SCOURTIN Lagon 110



SCOURTIN Gris 97



(Headquarters) SOTEXPRO - 510 route de Montchal - 42360 PANISSIÈRES - FRANCE - +33 4 77 27 60 60
(Showroom) Le LAB' SOTEXPRO - 4 rue du Mail - 75002 PARIS - FRANCE

Non-contractual photos and colors - Indicative fitting - Fitting may vary depending on support selected