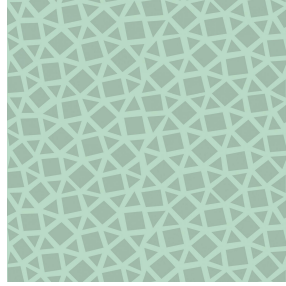




**COMET BPI 00**  
Printing support



**PEKKA Turquoise 53**  
Print pattern



Visual not taking into account the printing medium, the final rendering may vary according to the chosen medium.

# Printing support **COMET BPI 00** Print pattern **PEKKA Turquoise 53**

Blackout Print Support

## Technical properties



Flame retardant

**Applications** Roman blinds - Panel curtains - Curtains

**Composition** 100% polyester with white flocked acrylic backing

**Weight** 390 g/m<sup>2</sup>

**Width** 280 cm

**Fabric direction** Room High Direction

**Fitting** ↔ 18.0 cm ↓ 6.0 cm

**Maintenance advice**     

**Label**

**Minimum order** 25 linear(s) meter(s)

## Technical characteristics

Flame retardant

EN13773 : 2003 Class 1 / BS 5867 TYPE B / B1 / IMO PASS / UNI 8456 / 9174 Classe Uno

Resilience

Dimensional Stability (%)

Warp 0

Weft 0

Breaking Elongation

Warp 38

Weft 38

Breaking load (daN)

Warp 170

Weft 120

## Print pattern PEKKA



PEKKA Anis 62



PEKKA Grenat 56



PEKKA Orange 15



PEKKA cactus 36



(Headquarters) SOTEXPRO - 510 route de Montchal - 42360 PANISSIÈRES - FRANCE - +33 4 77 27 60 60  
(Showroom) Le LAB' SOTEXPRO - 4 rue du Mail - 75002 PARIS - FRANCE

*Non-contractual photos and colors - Indicative fitting - Fitting may vary depending on support selected*