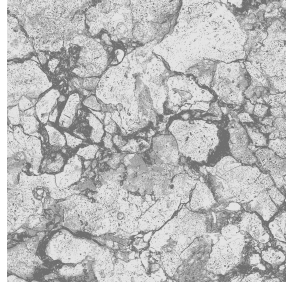




COMET BPI 00
Printing support



CARRARA Gris 97
Print pattern



Visual not taking into account the printing medium, the final rendering may vary according to the chosen medium.

Printing support **COMET BPI 00** Print pattern **CARRARA Gris 97**

Blackout Print Support

Technical properties



Flame retardant

Applications Roman blinds - Panel curtains - Curtains

Composition 100% polyester with white flocked acrylic backing

Weight 390 g/m²

Width 280 cm

Fabric direction Room High Direction

Fitting ↔ 0.0 cm ↓ 0.0 cm

Maintenance advice     

Label

Minimum order 25 linear(s) meter(s)

Technical characteristics

Flame retardant

EN13773 : 2003 Class 1 / BS 5867 TYPE B / B1 / IMO PASS / UNI 8456 / 9174 Classe Uno

Resilience

Dimensional Stability (%)

Warp 0

Weft 0

Breaking Elongation

Warp 38

Weft 38

Breaking load (daN)

Warp 170

Weft 120

Print pattern CARRARA



CARRARA Céladon 135



CARRARA Perle 96



CARRARA Lin 11



CARRARA Vieux rose 64



CARRARA Naturel 26



CARRARA Ficelle 09



CARRARA Chamois 111



CARRARA Absinthe 132



(Headquarters) SOTEXPRO - 510 route de Montchal - 42360 PANISSIÈRES - FRANCE - +33 4 77 27 60 60
(Showroom) Le LAB' SOTEXPRO - 4 rue du Mail - 75002 PARIS - FRANCE

Non-contractual photos and colors - Indicative fitting - Fitting may vary depending on support selected