



COMET BPI 00
Printing support



ELAINA Rouge 21
Print pattern



Printing support **COMET BPI 00** Print pattern **ELAINA Rouge 21**

Blackout Print Support

Technical properties



Flame retardant

Applications Curtains - Roman blinds - Panel curtains

Composition 100% polyester with white flocked acrylic backing

Weight 390 g/m²

Width 280 cm

Fabric direction Room High Direction

Fitting ↔ 0.0 cm ↓ 0.0 cm

Maintenance advice     

Label

Minimum order 25 linear(s) meter(s)



Visual not taking into account the printing medium, the final rendering may vary according to the chosen medium.

Technical characteristics

Flame retardant

EN13773 : 2003 Class 1 / BS 5867 TYPE B / B1 / IMO PASS / UNI 8456 / 9174 Classe Uno

Resilience

Dimensional Stability (%)

Warp 0

Weft 0

Breaking Elongation

Warp 38

Weft 38

Breaking load (daN)

Warp 170

Weft 120

Print pattern ELAINA



ELAINA Gris 91



ELAINA Violine 105



ELAINA Ocre 03



ELAINA Lin 11



ELAINA Bergamote 121



ELAINA Rose 129



ELAINA Pacifique 54



ELAINA Beige 63



ELAINA Céladon 135



ELAINA Saphir 106



ELAINA Anis 62



ELAINA Hortensia 134



ELAINA Prairie 125



ELAINA Graphite 77



ELAINA Lierre 124



ELAINA Naturel 26



ELAINA Genêt 06



ELAINA Ivoire 115



ELAINA Gentiane 16



ELAINA Navy 120



(Headquarters) SOTEXPRO - 510 route de Montchal - 42360 PANISSIÈRES - FRANCE - +33 4 77 27 60 60
(Showroom) Le LAB' SOTEXPRO - 4 rue du Mail - 75002 PARIS - FRANCE

Non-contractual photos and colors - Indicative fitting - Fitting may vary depending on support selected

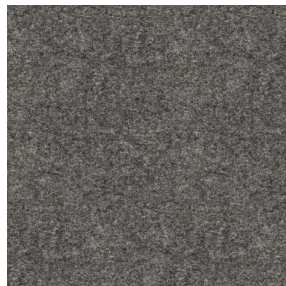
Print pattern ELAINA



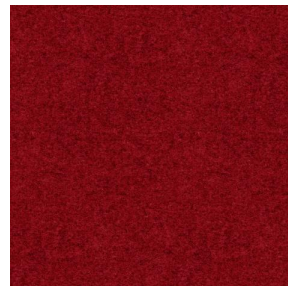
ELAINA Chamois 111



ELAINA Turquoise 53



ELAINA Anthracite 38



ELAINA Fiesta 131



(Headquarters) SOTEXPRO - 510 route de Montchal - 42360 PANISSIÈRES - FRANCE - +33 4 77 27 60 60
(Showroom) Le LAB' SOTEXPRO - 4 rue du Mail - 75002 PARIS - FRANCE

Non-contractual photos and colors - Indicative fitting - Fitting may vary depending on support selected