



COMET BPI 00
Printing support



TERRA Lagon 110
Print pattern



Printing support **COMET BPI 00** Print pattern **TERRA Lagon 110**

Blackout Print Support

Technical properties



Flame retardant

Applications Roman blinds - Panel curtains - Curtains

Composition 100% polyester with white flocked acrylic backing

Weight 390 g/m²

Width 280 cm

Fabric direction Room High Direction

Fitting ↔ 0.0 cm ↓ 0.0 cm

Maintenance advice     

Label

Minimum order 25 linear(s) meter(s)



Visual not taking into account the printing medium, the final rendering may vary according to the chosen medium.

Technical characteristics

Flame retardant

EN13773 : 2003 Class 1 / BS 5867 TYPE B / B1 / IMO PASS / UNI 8456 / 9174 Classe Uno

Resilience

Dimensional Stability (%)

Warp 0

Weft 0

Breaking Elongation

Warp 38

Weft 38

Breaking load (daN)

Warp 170

Weft 120

Print pattern TERRA



TERRA Ficelle 09



TERRA Taupe 95



TERRA Ecume 82



TERRA Rose 129



TERRA Fusain 71



TERRA Brun 23



TERRA Hortensia 134



TERRA Naturel 26



TERRA Anis 62



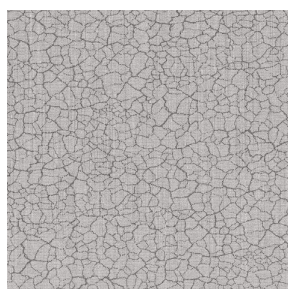
TERRA Citrouille 136



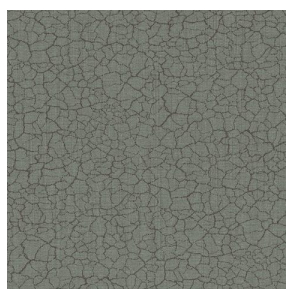
TERRA Pacifique 54



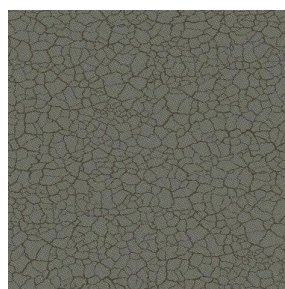
TERRA Chamois 111



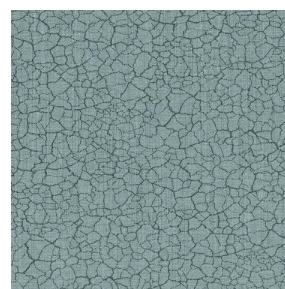
TERRA Titanium 98



TERRA Graphite 77



TERRA Gris 97



TERRA Ardoise 87



TERRA Violine 105



TERRA Chanvre 72



TERRA Argile 85



TERRA Lin 11



(Headquarters) SOTEXPRO - 510 route de Montchal - 42360 PANISSIÈRES - FRANCE - +33 4 77 27 60 60
(Showroom) Le LAB' SOTEXPRO - 4 rue du Mail - 75002 PARIS - FRANCE

Non-contractual photos and colors - Indicative fitting - Fitting may vary depending on support selected

Print pattern TERRA



TERRA Genêt 06



TERRA Céladon 135



TERRA Ebène 113



TERRA Ocre 03



(Headquarters) SOTEXPRO - 510 route de Montchal - 42360 PANISSIÈRES - FRANCE - +33 4 77 27 60 60
(Showroom) Le LAB' SOTEXPRO - 4 rue du Mail - 75002 PARIS - FRANCE

Non-contractual photos and colors - Indicative fitting - Fitting may vary depending on support selected