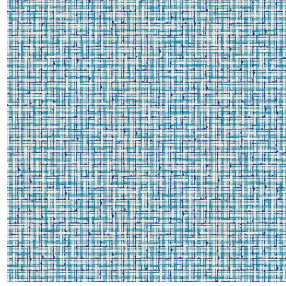




ETAMINE BPI 00
Printing support



SALIN Turquoise 53
Print pattern



Printing support **ETAMINE BPI 00** Print pattern **SALIN Turquoise 53**

High-quality, light and airy sheer curtains.

Technical properties



Flame retardant



Transparent

Applications Roman blinds - Panel curtains - Curtains

Composition 100% FR polyester

Weight 95 g/m²

Width 290 cm

Fabric direction Room High Direction

Fitting ↔ 0.0 cm ↓ 0.0 cm

Maintenance advice     

Label France Terre Textile / OEKO-TEX STANDARD 100

Minimum order 25 linear(s) meter(s)



Visual not taking into account the printing medium, the final rendering may vary according to the chosen medium.

Technical characteristics

Flame retardant

M1 / B1 / IMO PASS / UNI 8456 / 9174 Classe Uno

Transparent veil

Yes

Resilience

Dimensional Stability (%)

Warp

0

Weft

0

Breaking Elongation

Warp

46

Weft

13

Breaking load (daN)

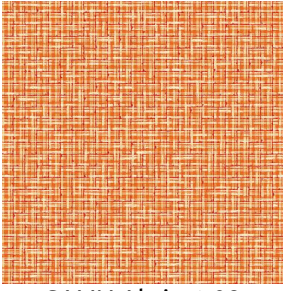
Warp

41

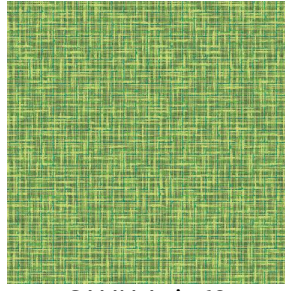
Weft

40

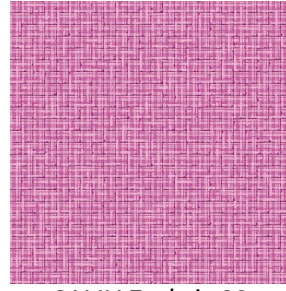
Print pattern SALIN



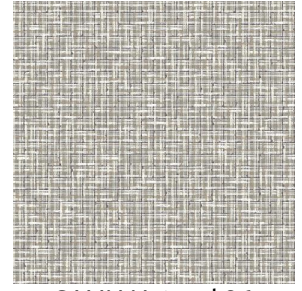
SALIN Abricot 08



SALIN Anis 62



SALIN Fuchsia 33



SALIN Naturel 26



SALIN Océan 91



SALIN Orange 15



SALIN Rouge 21



SALIN Vert 24



(Headquarters) SOTEXPRO - 510 route de Montchal - 42360 PANISSIÈRES - FRANCE - +33 4 77 27 60 60
(Showroom) Le LAB' SOTEXPRO - 4 rue du Mail - 75002 PARIS - FRANCE

Non-contractual photos and colors - Indicative fitting - Fitting may vary depending on support selected