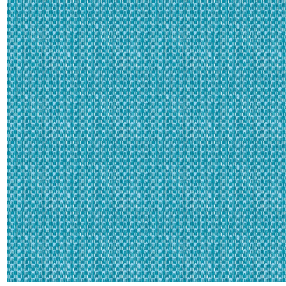




ETAMINE BPI 00
Printing support



RIVE Turquoise 53
Print pattern



Visual not taking into account the printing medium, the final rendering may vary according to the chosen medium.

Printing support **ETAMINE BPI 00** Print pattern **RIVE Turquoise 53**

High-quality, light and airy sheer curtains.

Technical properties



Flame retardant Transparent

Applications Roman blinds - Panel curtains - Curtains

Composition 100% FR polyester

Weight 95 g/m²

Width 290 cm

Fabric direction Room High Direction

Fitting ↔ 0.0 cm ↓ 0.0 cm

Maintenance advice     

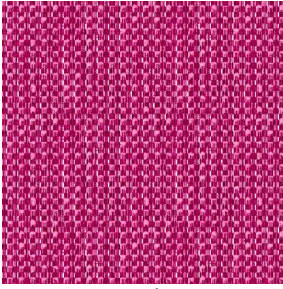
Label France Terre Textile / OEKO-TEX STANDARD 100

Minimum order 25 linear(s) meter(s)

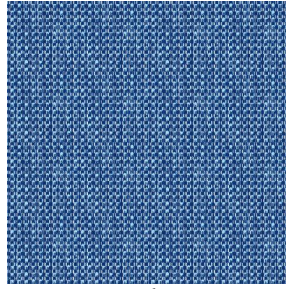
Technical characteristics

Flame retardant	M1 / B1 / IMO PASS / UNI 8456 / 9174 Classe Uno												
Transparent veil	Yes												
Resilience	<p>Dimensional Stability (%)</p> <table> <tr> <td>Warp</td> <td>0</td> </tr> <tr> <td>Weft</td> <td>0</td> </tr> </table> <p>Breaking Elongation</p> <table> <tr> <td>Warp</td> <td>46</td> </tr> <tr> <td>Weft</td> <td>13</td> </tr> </table> <p>Breaking load (daN)</p> <table> <tr> <td>Warp</td> <td>41</td> </tr> <tr> <td>Weft</td> <td>40</td> </tr> </table>	Warp	0	Weft	0	Warp	46	Weft	13	Warp	41	Weft	40
Warp	0												
Weft	0												
Warp	46												
Weft	13												
Warp	41												
Weft	40												

Print pattern RIVE



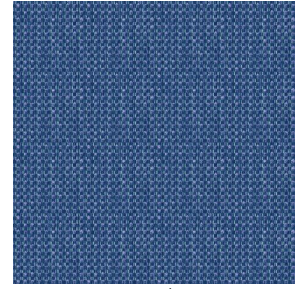
RIVE Fuchsia 33



RIVE Bleu 41



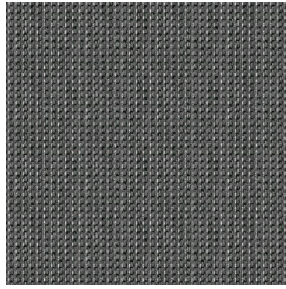
RIVE Jaune 46



RIVE Océan 91



RIVE Sable 67



RIVE Taupe 95



RIVE Gris 97



(Headquarters) SOTEXPRO - 510 route de Montchal - 42360 PANISSIÈRES - FRANCE - +33 4 77 27 60 60
(Showroom) Le LAB' SOTEXPRO - 4 rue du Mail - 75002 PARIS - FRANCE

Non-contractual photos and colors - Indicative fitting - Fitting may vary depending on support selected