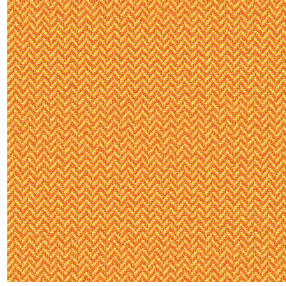




ETAMINE BPI 00
Printing support



SCOURTIN Maïs 37
Print pattern



Printing support **ETAMINE BPI 00** Print pattern **SCOURTIN Maïs 37**

High-quality, light and airy sheer curtains.

Technical properties



Flame retardant Transparent

Applications Roman blinds - Panel curtains - Curtains

Composition 100% FR polyester

Weight 95 g/m²

Width 290 cm

Fabric direction Room High Direction

Fitting ↔ cm ↓ cm

Maintenance advice     

Label France Terre Textile / OEKO-TEX STANDARD 100

Minimum order 25 linear(s) meter(s)



Visual not taking into account the printing medium, the final rendering may vary according to the chosen medium.

Technical characteristics

Flame retardant	M1 / B1 / IMO PASS / UNI 8456 / 9174 Classe Uno
Transparent veil	Yes
Resilience	<p>Dimensional Stability (%)</p> <p>Warp 0</p> <p>Weft 0</p> <p>Breaking Elongation</p> <p>Warp 46</p> <p>Weft 13</p> <p>Breaking load (daN)</p> <p>Warp 41</p> <p>Weft 40</p>

Print pattern SCOURTIN



SCOURTIN Beige 63



SCOURTIN Fuchsia 33



SCOURTIN Sapin 126



SCOURTIN Bergamote
121



SCOURTIN Anthracite
38



SCOURTIN Violine 105



SCOURTIN Pacifique 54



SCOURTIN Rose 129



SCOURTIN Blanc 01



SCOURTIN Lin 11



SCOURTIN Naturel 26



SCOURTIN Citrouille
136



SCOURTIN Turquoise 53



SCOURTIN Brun 23



SCOURTIN Hortensia
134



SCOURTIN Orage 123



SCOURTIN Rubis 59



SCOURTIN Ficelle 09



SCOURTIN Céladon 135



SCOURTIN Ebene 113



(Headquarters) SOTEXPRO - 510 route de Montchal - 42360 PANISSIÈRES - FRANCE - +33 4 77 27 60 60
(Showroom) Le LAB' SOTEXPRO - 4 rue du Mail - 75002 PARIS - FRANCE

Non-contractual photos and colors - Indicative fitting - Fitting may vary depending on support selected

Print pattern SCOURTIN



SCOURTIN Tourterelle
138



SCOURTIN Titanium 98



SCOURTIN Lagon 110



SCOURTIN Gris 97



(Headquarters) SOTEXPRO - 510 route de Montchal - 42360 PANISSIÈRES - FRANCE - +33 4 77 27 60 60
(Showroom) Le LAB' SOTEXPRO - 4 rue du Mail - 75002 PARIS - FRANCE

Non-contractual photos and colors - Indicative fitting - Fitting may vary depending on support selected