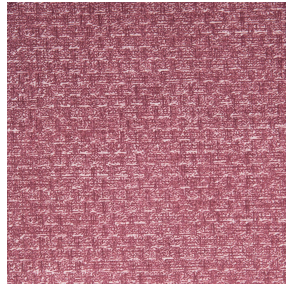




ETAMINE BPI 00  
Printing support



RUSTIC Hortensia 134  
Print pattern



## Printing support **ETAMINE BPI 00** Print pattern **RUSTIC Hortensia 134**

High-quality, light and airy sheer curtains.

### Technical properties



Flame retardant    Transparent

Applications    Roman blinds - Panel curtains - Curtains

Composition    100% FR polyester

Weight    95 g/m<sup>2</sup>

Width    290 cm

Fabric direction    Room High Direction

Fitting    ↔ cm    ↓ cm

Maintenance advice   

Label    France Terre Textile / OEKO-TEX STANDARD 100

Minimum order    25 linear(s) meter(s)



Visual not taking into account the printing medium, the final rendering may vary according to the chosen medium.

## Technical characteristics

Flame retardant	M1 / B1 / IMO PASS / UNI 8456 / 9174 Classe Uno
Transparent veil	Yes
Resilience	<p>Dimensional Stability (%)</p> <p>Warp    0</p> <p>Weft    0</p> <p>Breaking Elongation</p> <p>Warp    46</p> <p>Weft    13</p> <p>Breaking load (daN)</p> <p>Warp    41</p> <p>Weft    40</p>

# Print pattern RUSTIC



RUSTIC Lin 11



RUSTIC Naturel 26



RUSTIC Sienne 29



RUSTIC Terre 107



RUSTIC Taupe 95



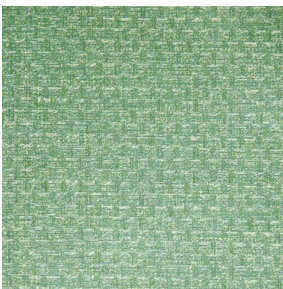
RUSTIC Titanium 98



RUSTIC Bergamote 121



RUSTIC Mousse 92



RUSTIC Prairie 125



RUSTIC Glacier 43



RUSTIC Bleu 41



(Headquarters) SOTEXPRO - 510 route de Montchal - 42360 PANISSIÈRES - FRANCE - +33 4 77 27 60 60  
(Showroom) Le LAB' SOTEXPRO - 4 rue du Mail - 75002 PARIS - FRANCE

*Non-contractual photos and colors - Indicative fitting - Fitting may vary depending on support selected*