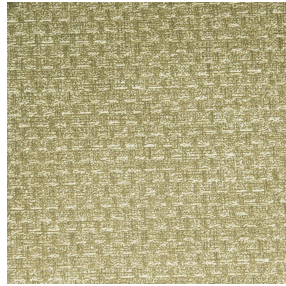




ETAMINE BPI 00
Printing support



RUSTIC Bergamote 121
Print pattern



Printing support **ETAMINE BPI 00** Print pattern **RUSTIC Bergamote 121**

High-quality, light and airy sheer curtains.

Technical properties



Flame retardant Transparent

Applications Roman blinds - Panel curtains - Curtains

Composition 100% FR polyester

Weight 95 g/m²

Width 290 cm

Fabric direction Room High Direction

Fitting ↔ cm ↓ cm

Maintenance advice

Label France Terre Textile / OEKO-TEX STANDARD 100

Minimum order 25 linear(s) meter(s)



Visual not taking into account the printing medium, the final rendering may vary according to the chosen medium.

Technical characteristics

Flame retardant	M1 / B1 / IMO PASS / UNI 8456 / 9174 Classe Uno	
Transparent veil	Yes	
Resilience	Dimentional Stability (%)	
	Warp	0
	Weft	0
	Breaking Elongation	
	Warp	46
	Weft	13
Breaking load (daN)	Warp	41
	Weft	40

Print pattern RUSTIC



RUSTIC Lin 11



RUSTIC Naturel 26



RUSTIC Sienne 29



RUSTIC Terre 107



RUSTIC Taupe 95



RUSTIC Titanium 98



RUSTIC Hortensia 134



RUSTIC Mousse 92



RUSTIC Prairie 125



RUSTIC Glacier 43



RUSTIC Bleu 41



(Headquarters) SOTEXPRO - 510 route de Montchal - 42360 PANISSIÈRES - FRANCE - +33 4 77 27 60 60
(Showroom) Le LAB' SOTEXPRO - 4 rue du Mail - 75002 PARIS - FRANCE

Non-contractual photos and colors - Indicative fitting - Fitting may vary depending on support selected