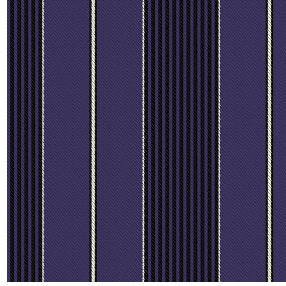




ETAMINE BPI 00
Printing support



GUSTAVE Prune 84
Print pattern



Printing support **ETAMINE BPI 00** Print pattern **GUSTAVE Prune 84**

High-quality, light and airy sheer curtains.

Technical properties



Flame retardant



Transparent

Applications Roman blinds - Panel curtains - Curtains


Composition 100% FR polyester

Weight 95 g/m²

Width 290 cm

Fabric direction Room High Direction

Fitting ↔ 14.0 cm ↓ 0.0 cm

Maintenance advice     

Label France Terre Textile / OEKO-TEX STANDARD 100

Minimum order 25 linear(s) meter(s)

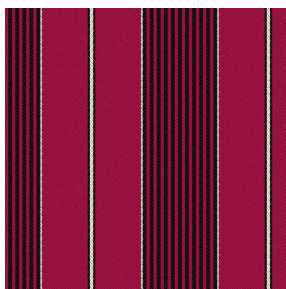


Visual not taking into account the printing medium, the final rendering may vary according to the chosen medium.

Technical characteristics

| | | | | | | | | | | | | | |
|------------------|---|------|---|------|---|------|----|------|----|------|----|------|----|
| Flame retardant | M1 / B1 / IMO PASS / UNI 8456 / 9174 Classe Uno | | | | | | | | | | | | |
| Transparent veil | Yes | | | | | | | | | | | | |
| Resilience | <p>Dimensional Stability (%)</p> <table> <tr> <td>Warp</td> <td>0</td> </tr> <tr> <td>Weft</td> <td>0</td> </tr> </table> <p>Breaking Elongation</p> <table> <tr> <td>Warp</td> <td>46</td> </tr> <tr> <td>Weft</td> <td>13</td> </tr> </table> <p>Breaking load (daN)</p> <table> <tr> <td>Warp</td> <td>41</td> </tr> <tr> <td>Weft</td> <td>40</td> </tr> </table> | Warp | 0 | Weft | 0 | Warp | 46 | Weft | 13 | Warp | 41 | Weft | 40 |
| Warp | 0 | | | | | | | | | | | | |
| Weft | 0 | | | | | | | | | | | | |
| Warp | 46 | | | | | | | | | | | | |
| Weft | 13 | | | | | | | | | | | | |
| Warp | 41 | | | | | | | | | | | | |
| Weft | 40 | | | | | | | | | | | | |

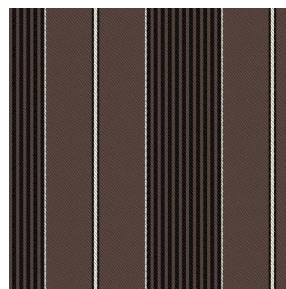
Print pattern GUSTAVE



GUSTAVE Rubis 59



GUSTAVE Céladon 135



GUSTAVE Taupe 95



(Headquarters) SOTEXPRO - 510 route de Montchal - 42360 PANISSIÈRES - FRANCE - +33 4 77 27 60 60
(Showroom) Le LAB' SOTEXPRO - 4 rue du Mail - 75002 PARIS - FRANCE

Non-contractual photos and colors - Indicative fitting - Fitting may vary depending on support selected