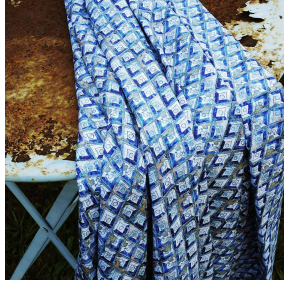




**ETAMINE BPI 00**  
Printing support



**CLEMENTINA Azur 137**  
Print pattern



Visual not taking into account the printing medium, the final rendering may vary according to the chosen medium.

## Printing support **ETAMINE BPI 00** Print pattern **CLEMENTINA Azur 137**

High-quality, light and airy sheer curtains.

### Technical properties



Flame retardant



Transparent

**Applications** Roman blinds - Panel curtains - Curtains

**Composition** 100% FR polyester

**Weight** 95 g/m<sup>2</sup>

**Width** 290 cm

**Fabric direction** Room High Direction

**Fitting** ↔ 15.0 cm ↓ 11.0 cm

**Maintenance advice**     

**Label** France Terre Textile / OEKO-TEX STANDARD 100

**Minimum order** 25 linear(s) meter(s)

## Technical characteristics

Flame retardant

M1 / B1 / IMO PASS / UNI 8456 / 9174 Classe Uno

Transparent veil

Yes

Resilience

Dimensional Stability (%)

Warp 0

Weft 0

Breaking Elongation

Warp 46

Weft 13

Breaking load (daN)

Warp 41

Weft 40

# Print pattern CLEMENTINA



CLEMENTINA Ficelle 09



(Headquarters) SOTEXPRO - 510 route de Montchal - 42360 PANISSIÈRES - FRANCE - +33 4 77 27 60 60  
(Showroom) Le LAB' SOTEXPRO - 4 rue du Mail - 75002 PARIS - FRANCE

Non-contractual photos and colors - Indicative fitting - Fitting may vary depending on support selected