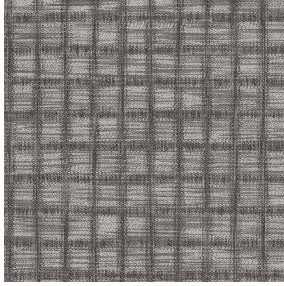


ETAMINE BPI 00
Printing support



ECUME Taupe 95
Print pattern

Printing support **ETAMINE BPI 00** Print pattern **ECUME Taupe 95**

High-quality, light and airy sheer curtains.

Technical properties



Flame retardant



Transparent

Applications Roman blinds - Panel curtains - Curtains

Composition 100% FR polyester

Weight 95 g/m²

Width 290 cm


Fabric direction Room High Direction

Fitting ↔ 20.0 cm ↓ 22.0 cm

Maintenance advice     

Label France Terre Textile / OEKO-TEX STANDARD 100

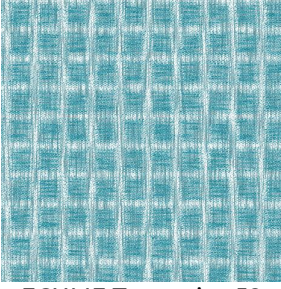
Minimum order 25 linear(s) meter(s)

 Visual not taking into account the printing medium, the final rendering may vary according to the chosen medium.

Technical characteristics

| | | |
|------------------|---|----|
| Flame retardant | M1 / B1 / IMO PASS / UNI 8456 / 9174 Classe Uno | |
| Transparent veil | Yes | |
| Resilience | Dimentional Stability (%) | |
| | Warp | 0 |
| | Weft | 0 |
| | Breaking Elongation | |
| | Warp | 46 |
| | Weft | 13 |
| | Breaking load (daN) | |
| | Warp | 41 |
| | Weft | 40 |

Print pattern ECUME



ECUME Turquoise 53



(Headquarters) SOTEXPRO - 510 route de Montchal - 42360 PANISSIÈRES - FRANCE - +33 4 77 27 60 60
(Showroom) Le LAB' SOTEXPRO - 4 rue du Mail - 75002 PARIS - FRANCE

Non-contractual photos and colors - Indicative fitting - Fitting may vary depending on support selected