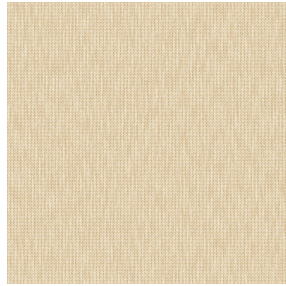




ETAMINE BPI 00
Printing support



CALI Naturel 26
Print pattern

Printing support **ETAMINE BPI 00** Print pattern **CALI Naturel 26**

High-quality, light and airy sheer curtains.

Technical properties



Flame retardant Transparent

Applications Roman blinds - Panel curtains - Curtains

Composition 100% FR polyester

Weight 95 g/m²

Width 290 cm

Fabric direction Room High Direction

Fitting ↔ 33.0 cm ↓ 33.0 cm

Maintenance advice     

Label France Terre Textile / OEKO-TEX STANDARD 100

Minimum order 25 linear(s) meter(s)



Visual not taking into account the printing medium, the final rendering may vary according to the chosen medium.

Technical characteristics

Flame retardant	M1 / B1 / IMO PASS / UNI 8456 / 9174 Classe Uno
Transparent veil	Yes
Resilience	<p>Dimensional Stability (%)</p> <p>Warp 0</p> <p>Weft 0</p> <p>Breaking Elongation</p> <p>Warp 46</p> <p>Weft 13</p> <p>Breaking load (daN)</p> <p>Warp 41</p> <p>Weft 40</p>

Print pattern CALI



CALI Orange 15



CALI Terracotta 65



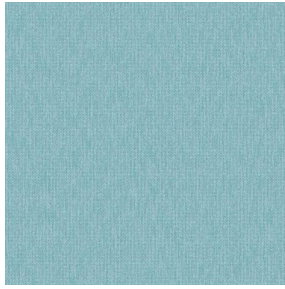
CALI Jade 116



CALI Lierre 24



CALI Soleil 127



CALI Etang 165



(Headquarters) SOTEXPRO - 510 route de Montchal - 42360 PANISSIÈRES - FRANCE - +33 4 77 27 60 60
(Showroom) Le LAB' SOTEXPRO - 4 rue du Mail - 75002 PARIS - FRANCE

Non-contractual photos and colors - Indicative fitting - Fitting may vary depending on support selected