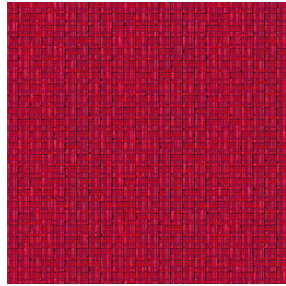




LY Blanc 01
Printing support



SALIN Rouge 21
Print pattern



Printing support **LY Blanc 01** Print pattern **SALIN Rouge 21**

Fine linen look sheer. The weaving of the LY is slightly textured which allows it to be easily printed by sublimation

Technical properties



Flame retardant Transparent

Applications Roman blinds - Panel curtains - Curtains

Composition 100% polyester/polyester FR

Weight 90 g/m²

Width 290 cm

Fabric direction Room High Direction

Fitting ↔ 0.0 cm ↓ 0.0 cm

Maintenance advice     

Label France Terre Textile / OEKO-TEX STANDARD 100

Minimum order 25 linear(s) meter(s)



Visual not taking into account the printing medium, the final rendering may vary according to the chosen medium.

Technical characteristics

Flame retardant	M1 / B1 / IMO PASS
Optical index	Light reflexion : 33 %
	Light absorption : 2 %
	Light transmission : 65 %
Transparent veil	Yes
Thermal index	Solar reflexion : 32 %
	Solar absorption : 4 %
	Solar transmission : 64 %
	UV transmission : 50 %
	Gtot : Gt 48 % Fc 81 %
Resilience	Lightfastness (units Class/8) 6
	Dimensional Stability (%)
	Warp 0
	Weft 0
	Breaking Elongation
	Warp 69
	Weft 58
	Breaking load (daN)
	Warp 47
Weft 24	

Print pattern SALIN



SALIN Abricot 08



SALIN Anis 62



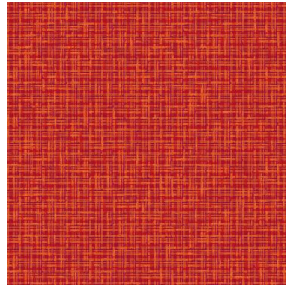
SALIN Fuchsia 33



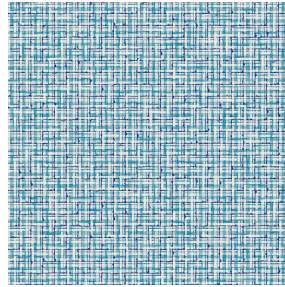
SALIN Naturel 26



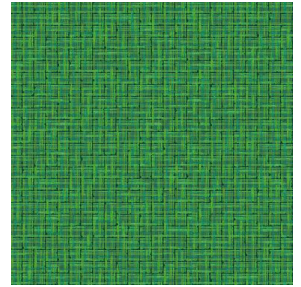
SALIN Océan 91



SALIN Orange 15



SALIN Turquoise 53



SALIN Vert 24



(Headquarters) SOTEXPRO - 510 route de Montchal - 42360 PANISSIÈRES - FRANCE - +33 4 77 27 60 60

Non-contractual photos and colors - Indicative fitting - Fitting may vary depending on support selected