



LY Blanc 01
Printing support



ODE Fuchsia 33
Print pattern



Printing support **LY Blanc 01** Print pattern **ODE Fuchsia 33**

Fine linen look sheer. The weaving of the LY is slightly textured which allows it to be easily printed by sublimation

Technical properties



Flame retardant Transparent

Applications Roman blinds - Panel curtains - Curtains

Composition 100% polyester/polyester FR

Weight 90 g/m²

Width 290 cm

Fabric direction Room High Direction

Fitting ↔ 50.0 cm ↓ 50.0 cm

Maintenance advice     

Label France Terre Textile / OEKO-TEX STANDARD 100

Minimum order 25 linear(s) meter(s)

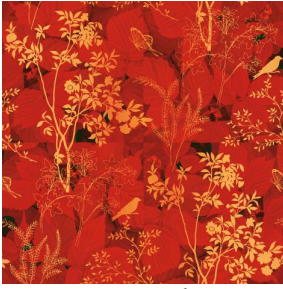


Visual not taking into account the printing medium, the final rendering may vary according to the chosen medium.

Technical characteristics

Flame retardant	M1 / B1 / IMO PASS	
Optical index	Light reflexion :	33 %
	Light absorption :	2 %
	Light transmission :	65 %
Transparent veil	Yes	
Thermal index	Solar reflexion :	32 %
	Solar absorption :	4 %
	Solar transmission :	64 %
	UV transmission :	50 %
	Gtot :	Gt 48 % Fc 81 %
Resilience	Lightfastness (units Class/8)	6
	Dimensional Stability (%)	
	Warp	0
	Weft	0
	Breaking Elongation	
	Warp	69
	Weft	58
	Breaking load (daN)	
	Warp	47
	Weft	24

Print pattern ODE



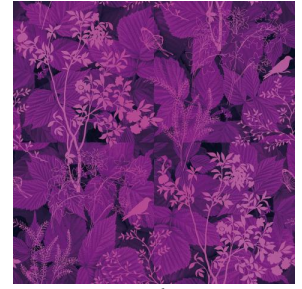
ODE Corail 14



ODE Bleu 41



ODE Turquoise 53



ODE Lilas 19



(Headquarters) SOTEXPRO - 510 route de Montchal - 42360 PANISSIÈRES - FRANCE - +33 4 77 27 60 60

Non-contractual photos and colors - Indicative fitting - Fitting may vary depending on support selected