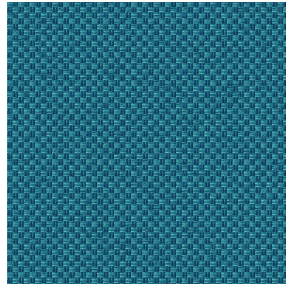




LY Blanc 01  
Printing support



CHARLOTTE Pacifique 54  
Print pattern



Visual not taking into account the printing medium, the final rendering may vary according to the chosen medium.

## Printing support **LY Blanc 01** Print pattern **CHARLOTTE Pacifique** **54**

Fine linen look sheer. The weaving of the LY is slightly textured which allows it to be easily printed by sublimation

### Technical properties



Flame retardant



Transparent

**Applications** Roman blinds - Panel curtains - Curtains


**Composition** 100% polyester/polyester FR

**Weight** 90 g/m<sup>2</sup>

**Width** 300 cm

**Fabric direction** Room High Direction

**Fitting** ↔ 0.0 cm ↓ 0.0 cm

**Maintenance advice**     

**Label** France Terre Textile / OEKO-TEX STANDARD 100

**Minimum order** 25 linear(s) meter(s)

## Technical characteristics

|                  |                               |                 |
|------------------|-------------------------------|-----------------|
| Flame retardant  | M1 / B1 / IMO PASS            |                 |
| Optical index    | Light reflexion :             | 33 %            |
|                  | Light absorption :            | 2 %             |
|                  | Light transmission :          | 65 %            |
| Transparent veil | Yes                           |                 |
| Thermal index    | Solar reflexion :             | 32 %            |
|                  | Solar absorption :            | 4 %             |
|                  | Solar transmission :          | 64 %            |
|                  | UV transmission :             | 50 %            |
|                  | Gtot :                        | Gt 48 % Fc 81 % |
| Resilience       | Lightfastness (units Class/8) | 6               |
|                  | Dimensional Stability (%)     |                 |
|                  | Warp                          | 0               |
|                  | Weft                          | 0               |
|                  | Breaking Elongation           |                 |
|                  | Warp                          | 69              |
|                  | Weft                          | 58              |
|                  | Breaking load (daN)           |                 |
|                  | Warp                          | 47              |
|                  | Weft                          | 24              |

# Print pattern CHARLOTTE



CHARLOTTE Absinthe  
132



CHARLOTTE Anis 62



CHARLOTTE Beige 63



CHARLOTTE Bouteille  
101



CHARLOTTE Brume 47



CHARLOTTE Cerise 66



CHARLOTTE Chamois  
111



CHARLOTTE Chataigne  
55



CHARLOTTE Chaudron  
118



CHARLOTTE Chocolat  
70



CHARLOTTE Citrouille  
136



CHARLOTTE Cobalt 114



CHARLOTTE Crepuscule  
45



CHARLOTTE Cuivre 50



CHARLOTTE Ebene 124



CHARLOTTE Ficelle 09



CHARLOTTE Fiesta 131



CHARLOTTE Grenat 56



CHARLOTTE Gris 97



CHARLOTTE Hortensia  
134



(Headquarters) SOTEXPRO - 510 route de Montchal - 42360 PANISSIÈRES - FRANCE - +33 4 77 27 60 60  
(Showroom) Le LAB' SOTEXPRO - 4 rue du Mail - 75002 PARIS - FRANCE

Non-contractual photos and colors - Indicative fitting - Fitting may vary depending on support selected

# Print pattern CHARLOTTE



CHARLOTTE Lagon 110



CHARLOTTE Lilas 19



CHARLOTTE Lin 11



CHARLOTTE Maïs 37



CHARLOTTE Melon 22



CHARLOTTE Menthe  
122



CHARLOTTE Mordore  
133



CHARLOTTE Mousse 92



CHARLOTTE Noir 10



CHARLOTTE Océan 91



CHARLOTTE Opéra 104



CHARLOTTE Orange 15



CHARLOTTE Prairie 125



CHARLOTTE Printemps  
130



CHARLOTTE Sienne 29



CHARLOTTE Souris 31



CHARLOTTE Terre 107



CHARLOTTE Tilleul 103



CHARLOTTE Vieux rose  
64



CHARLOTTE Violine 105



(Headquarters) SOTEXPRO - 510 route de Montchal - 42360 PANISSIÈRES - FRANCE - +33 4 77 27 60 60  
(Showroom) Le LAB' SOTEXPRO - 4 rue du Mail - 75002 PARIS - FRANCE

Non-contractual photos and colors - Indicative fitting - Fitting may vary depending on support selected