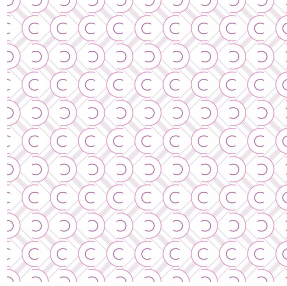




LY Blanc 01  
Printing support



VARELY Violine 105  
Print pattern



## Printing support **LY Blanc 01** Print pattern **VARELY Violine 105**

Fine linen look sheer. The weaving of the LY is slightly textured which allows it to be easily printed by sublimation

### Technical properties



Flame retardant    Transparent

**Applications** Roman blinds - Panel curtains - Curtains



**Composition** 100% polyester/polyester FR

**Weight** 90 g/m<sup>2</sup>

**Width** 290 cm

**Fabric direction** Room High Direction

**Fitting** ↔ 0.0 cm ↓ 0.0 cm

**Maintenance advice**     

**Label** France Terre Textile / OEKO-TEX STANDARD 100

**Minimum order** 25 linear(s) meter(s)

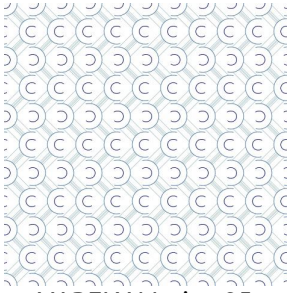


Visual not taking into account the printing medium, the final rendering may vary according to the chosen medium.

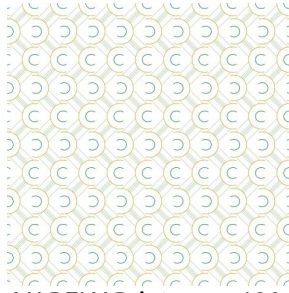
## Technical characteristics

|                  |  |
|------------------|--|
| Flame retardant  | M1 / B1 / IMO PASS                     |
| Optical index    | Light reflexion : <b>33 %</b>          |
|                  | Light absorption : <b>2 %</b>          |
|                  | Light transmission : <b>65 %</b>       |
| Transparent veil | Yes                                    |
| Thermal index    | Solar reflexion : <b>32 %</b>          |
|                  | Solar absorption : <b>4 %</b>          |
|                  | Solar transmission : <b>64 %</b>       |
|                  | UV transmission : <b>50 %</b>          |
|                  | Gtot : <b>Gt 48 % Fc 81 %</b>          |
| Resilience       | Lightfastness (units Class/8) <b>6</b> |
|                  | Dimensional Stability (%)              |
|                  | Warp <b>0</b>                          |
|                  | Weft <b>0</b>                          |
|                  | Breaking Elongation                    |
|                  | Warp <b>69</b>                         |
|                  | Weft <b>58</b>                         |
|                  | Breaking load (daN)                    |
|                  | Warp <b>47</b>                         |
|                  | Weft <b>24</b>                         |

# Print pattern VARELY



VARELY Marine 25



VARELY Printemps 130



VARELY Titanium 98



(Headquarters) SOTEXPRO - 510 route de Montchal - 42360 PANISSIÈRES - FRANCE - +33 4 77 27 60 60

*Non-contractual photos and colors - Indicative fitting - Fitting may vary depending on support selected*