



LY Blanc 01  
Printing support



GONIDIE Brun 23  
Print pattern



## Printing support **LY Blanc 01** Print pattern **GONIDIE Brun 23**

Fine linen look sheer. The weaving of the LY is slightly textured which allows it to be easily printed by sublimation

### Technical properties



Flame retardant    Transparent

**Applications** Roman blinds - Panel curtains - Curtains

**Composition** 100% polyester/polyester FR

**Weight** 90 g/m<sup>2</sup>

**Width** 290 cm

**Fabric direction** Room High Direction

**Fitting** ↔ 0.0 cm ↓ 0.0 cm

**Maintenance advice**     

**Label** France Terre Textile / OEKO-TEX STANDARD 100

**Minimum order** 25 linear(s) meter(s)



Visual not taking into account the printing medium, the final rendering may vary according to the chosen medium.

## Technical characteristics

|                  |                               |                 |    |
|------------------|-------------------------------|-----------------|----|
| Flame retardant  | M1 / B1 / IMO PASS            |                 |    |
| Optical index    | Light reflexion :             | 33 %            |    |
|                  | Light absorption :            | 2 %             |    |
|                  | Light transmission :          | 65 %            |    |
| Transparent veil | Yes                           |                 |    |
| Thermal index    | Solar reflexion :             | 32 %            |    |
|                  | Solar absorption :            | 4 %             |    |
|                  | Solar transmission :          | 64 %            |    |
|                  | UV transmission :             | 50 %            |    |
|                  | Gtot :                        | Gt 48 % Fc 81 % |    |
| Resilience       | Lightfastness (units Class/8) | 6               |    |
|                  | Dimensional Stability (%)     | Warp            | 0  |
|                  |                               | Weft            | 0  |
|                  | Breaking Elongation           | Warp            | 69 |
|                  |                               | Weft            | 58 |
|                  | Breaking load (daN)           | Warp            | 47 |
|                  |                               | Weft            | 24 |

# Print pattern GONIDIE



GONIDIE Souris 31



GONIDIE Beige 63



GONIDIE Citrouille 136



GONIDIE Glacier 43



GONIDIE Noir 10



GONIDIE Céladon 135



GONIDIE Anis 62



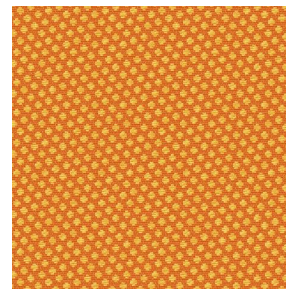
GONIDIE Perle 96



GONIDIE Mousse 92



GONIDIE Tourterelle  
138



GONIDIE Brique 42



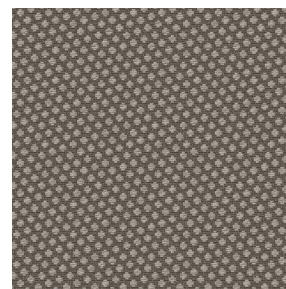
GONIDIE Opéra 104



GONIDIE Pacifique 54



GONIDIE Crème 32



GONIDIE Taupe 95



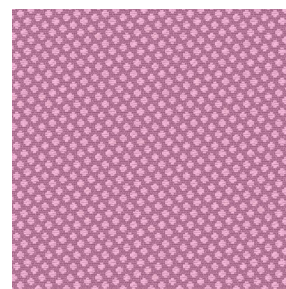
GONIDIE Lin 11



GONIDIE Lierre 124



GONIDIE Bergamote  
121



GONIDIE Hortensia 134



GONIDIE Vieux rose 64



(Headquarters) SOTEXPRO - 510 route de Montchal - 42360 PANISSIÈRES - FRANCE - +33 4 77 27 60 60

Non-contractual photos and colors - Indicative fitting - Fitting may vary depending on support selected

## Print pattern GONIDIE



GONIDIE Emeraude 88



GONIDIE Fuchsia 33



GONIDIE Ebene 113



GONIDIE Ficelle 09



(Headquarters) SOTEXPRO - 510 route de Montchal - 42360 PANISSIÈRES - FRANCE - +33 4 77 27 60 60

*Non-contractual photos and colors - Indicative fitting - Fitting may vary depending on support selected*