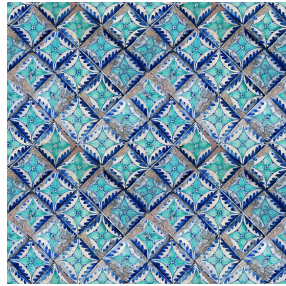




LY Blanc 01  
Printing support



PIETRO Azur 137  
Print pattern



## Printing support **LY Blanc 01** Print pattern **PIETRO Azur 137**

Fine linen look sheer. The weaving of the LY is slightly textured which allows it to be easily printed by sublimation

### Technical properties



Flame retardant    Transparent

**Applications** Roman blinds - Panel curtains - Curtains

**Composition** 100% polyester/polyester FR

**Weight** 90 g/m<sup>2</sup>

**Width** 290 cm

**Fabric direction** Room High Direction

**Fitting** ↔ 35.0 cm ↓ 35.0 cm

**Maintenance advice**     

**Label** France Terre Textile / OEKO-TEX STANDARD 100

**Minimum order** 25 linear(s) meter(s)



Visual not taking into account the printing medium, the final rendering may vary according to the chosen medium.

## Technical characteristics

Flame retardant	M1 / B1 / IMO PASS
Optical index	Light reflexion : <b>33 %</b>
	Light absorption : <b>2 %</b>
	Light transmission : <b>65 %</b>
Transparent veil	Yes
Thermal index	Solar reflexion : <b>32 %</b>
	Solar absorption : <b>4 %</b>
	Solar transmission : <b>64 %</b>
	UV transmission : <b>50 %</b>
	Gtot : <b>Gt 48 % Fc 81 %</b>
Resilience	Lightfastness (units Class/8) <b>6</b>
	Dimensional Stability (%)
	Warp <b>0</b>
	Weft <b>0</b>
	Breaking Elongation
	Warp <b>69</b>
	Weft <b>58</b>
	Breaking load (daN)
	Warp <b>47</b>
Weft <b>24</b>	

# Print pattern PIETRO



PIETRO Ficelle 09



(Headquarters) SOTEXPRO - 510 route de Montchal - 42360 PANISSIÈRES - FRANCE - +33 4 77 27 60 60

Non-contractual photos and colors - Indicative fitting - Fitting may vary depending on support selected