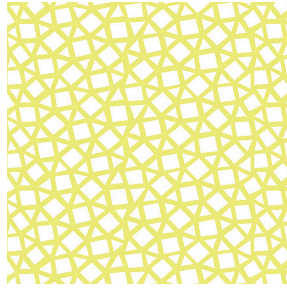




LY Blanc 01
Printing support



PEKKA cactus 36
Print pattern

Printing support **LY Blanc 01** Print pattern **PEKKA cactus 36**

Fine linen look sheer. The weaving of the LY is slightly textured which allows it to be easily printed by sublimation

Technical properties



Flame retardant Transparent

Applications Roman blinds - Panel curtains - Curtains

Composition 100% polyester/polyester FR

Weight 90 g/m²

Width 290 cm

Fabric direction Room High Direction

Fitting ↔ 18.0 cm ↓ 6.0 cm

Maintenance advice     

Label France Terre Textile / OEKO-TEX STANDARD 100

Minimum order 25 linear(s) meter(s)



Visual not taking into account the printing medium, the final rendering may vary according to the chosen medium.

Technical characteristics

| | | |
|------------------|-------------------------------|-----------------|
| Flame retardant | M1 / B1 / IMO PASS | |
| Optical index | Light reflexion : | 33 % |
| | Light absorption : | 2 % |
| | Light transmission : | 65 % |
| Transparent veil | Yes | |
| Thermal index | Solar reflexion : | 32 % |
| | Solar absorption : | 4 % |
| | Solar transmission : | 64 % |
| | UV transmission : | 50 % |
| | Gtot : | Gt 48 % Fc 81 % |
| Resilience | Lightfastness (units Class/8) | 6 |
| | Dimensional Stability (%) | |
| | Warp | 0 |
| | Weft | 0 |
| | Breaking Elongation | |
| | Warp | 69 |
| | Weft | 58 |
| | Breaking load (daN) | |
| | Warp | 47 |
| | Weft | 24 |

Print pattern PEKKA



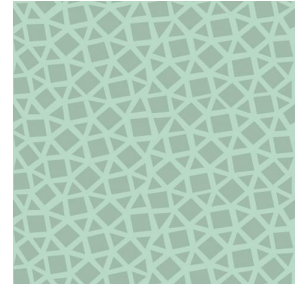
PEKKA Anis 62



PEKKA Grenat 56



PEKKA Orange 15



PEKKA Turquoise 53



(Headquarters) SOTEXPRO - 510 route de Montchal - 42360 PANISSIÈRES - FRANCE - +33 4 77 27 60 60

Non-contractual photos and colors - Indicative fitting - Fitting may vary depending on support selected