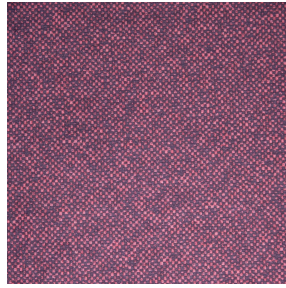
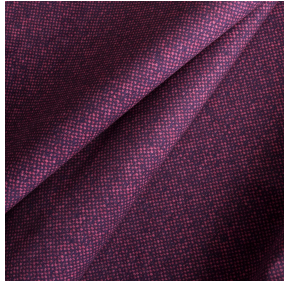




LY BPI 00
Printing support



ANATOLE Amarante 108
Print pattern



Visual not taking into account the printing medium, the final rendering may vary according to the chosen medium.

Printing support **LY BPI 00** Print pattern **ANATOLE Amarante 108**

Fine linen look sheer. The weaving of the LY is slightly textured which allows it to be easily printed by sublimation

Technical properties



Flame retardant



Transparent

Applications Roman blinds - Panel curtains - Curtains


Composition 100% polyester/polyester FR

Weight 90 g/m²

Width 290 cm

Fabric direction Room High Direction

Fitting ↔ cm ↓ cm

Maintenance advice     

Label France Terre Textile / OEKO-TEX STANDARD 100

Minimum order 25 linear(s) meter(s)

Technical characteristics

Flame retardant

M1 / B1 / IMO PASS

Transparent veil

Yes

Resilience

Lightfastness (units Class/8)

6

Dimensional Stability (%)

Warp

0

Weft

0

Breaking Elongation

Warp

69

Weft

58

Breaking load (daN)

Warp

47

Weft

24

Print pattern ANATOLE



ANATOLE Naturel 26



ANATOLE lin 11



ANATOLE Ficelle 09



ANATOLE Celadon 135



ANATOLE Océan 91



ANATOLE Titanium 98



ANATOLE Cactus 36



ANATOLE mousse 92



ANATOLE Or 94



ANATOLE Chaudron
118



ANATOLE Taupe 95



(Headquarters) SOTEXPRO - 510 route de Montchal - 42360 PANISSIÈRES - FRANCE - +33 4 77 27 60 60
(Showroom) Le LAB' SOTEXPRO - 4 rue du Mail - 75002 PARIS - FRANCE

Non-contractual photos and colors - Indicative fitting - Fitting may vary depending on support selected