



LY BPI 00
Printing support



MELODY Fuchsia 33
Print pattern



Printing support **LY BPI 00** Print pattern **MELODY Fuchsia 33**

Fine linen look sheer. The weaving of the LY is slightly textured which allows it to be easily printed by sublimation

Technical properties



Flame retardant Transparent

Applications Roman blinds - Panel curtains - Curtains

Composition 100% polyester/polyester FR

Weight 90 g/m²

Width 290 cm

Fabric direction Room High Direction

Fitting ↔ 0.0 cm ↓ 0.0 cm

Maintenance advice     

Label France Terre Textile / OEKO-TEX STANDARD 100

Minimum order 25 linear(s) meter(s)



Visual not taking into account the printing medium, the final rendering may vary according to the chosen medium.

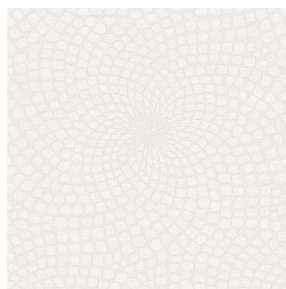
Technical characteristics

Flame retardant	M1 / B1 / IMO PASS
Transparent veil	Yes
Resilience	<p>Lightfastness (units Class/8) 6</p> <p>Dimensional Stability (%)</p> <p> Warp 0</p> <p> Weft 0</p> <p>Breaking Elongation</p> <p> Warp 69</p> <p> Weft 58</p> <p>Breaking load (daN)</p> <p> Warp 47</p> <p> Weft 24</p>

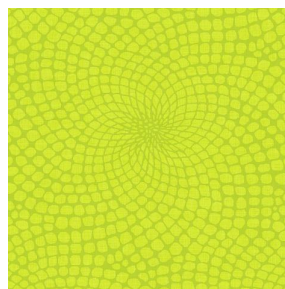
Print pattern MELODY



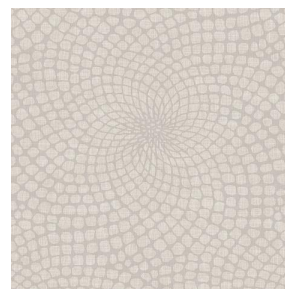
MELODY Vanille 51



MELODY Naturel 26



MELODY Anis 62



MELODY Lin 11



MELODY Orange 15



MELODY Ficelle 09



MELODY Turquoise 53



MELODY Acier 18



(Headquarters) SOTEXPRO - 510 route de Montchal - 42360 PANISSIÈRES - FRANCE - +33 4 77 27 60 60
(Showroom) Le LAB' SOTEXPRO - 4 rue du Mail - 75002 PARIS - FRANCE

Non-contractual photos and colors - Indicative fitting - Fitting may vary depending on support selected