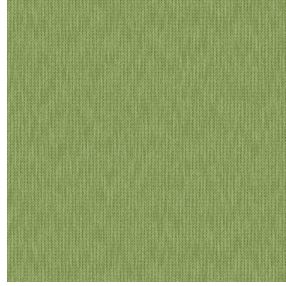




LY BPI 00
Printing support



CALI Lierre 24
Print pattern

Printing support **LY BPI 00** Print pattern **CALI Lierre 24**

Fine linen look sheer. The weaving of the LY is slightly textured which allows it to be easily printed by sublimation

Technical properties



Flame retardant



Transparent

Applications Roman blinds - Panel curtains - Curtains

Composition 100% polyester/polyester FR

Weight 90 g/m²

Width 290 cm

Fabric direction Room High Direction

Fitting ↔ 33.0 cm ↓ 33.0 cm

Maintenance advice     

Label France Terre Textile / OEKO-TEX STANDARD 100

Minimum order 25 linear(s) meter(s)



Visual not taking into account the printing medium, the final rendering may vary according to the chosen medium.

Technical characteristics

Flame retardant	M1 / B1 / IMO PASS	
Transparent veil	Yes	
Resilience	Lightfastness (units Class/8)	6
	Dimensional Stability (%)	
	Warp	0
	Weft	0
	Breaking Elongation	
	Warp	69
	Weft	58
	Breaking load (daN)	
	Warp	47
	Weft	24

Print pattern CALI



CALI Orange 15



CALI Terracotta 65



CALI Jade 116



CALI Soleil 127



CALI Etang 165



CALI Naturel 26



(Headquarters) SOTEXPRO - 510 route de Montchal - 42360 PANISSIÈRES - FRANCE - +33 4 77 27 60 60
(Showroom) Le LAB' SOTEXPRO - 4 rue du Mail - 75002 PARIS - FRANCE

Non-contractual photos and colors - Indicative fitting - Fitting may vary depending on support selected