



LY BPI 00  
Printing support



SONG Agrume 69  
Print pattern



## Printing support **LY BPI 00** Print pattern **SONG Agrume 69**

Fine linen look sheer. The weaving of the LY is slightly textured which allows it to be easily printed by sublimation

### Technical properties



Flame retardant    Transparent

**Applications** Roman blinds - Panel curtains - Curtains

**Composition** 100% polyester/polyester FR

**Weight** 90 g/m<sup>2</sup>

**Width** 290 cm

**Fabric direction** Room High Direction

**Fitting** ↔ 35.0 cm ↓ 35.0 cm

**Maintenance advice**     

**Label** France Terre Textile / OEKO-TEX STANDARD 100

**Minimum order** 25 linear(s) meter(s)



Visual not taking into account the printing medium, the final rendering may vary according to the chosen medium.

## Technical characteristics

Flame retardant	M1 / B1 / IMO PASS	
Transparent veil	Yes	
Resilience	Lightfastness (units Class/8)	<b>6</b>
	Dimensional Stability (%)	
	Warp	<b>0</b>
	Weft	<b>0</b>
	Breaking Elongation	
	Warp	<b>69</b>
	Weft	<b>58</b>
	Breaking load (daN)	
	Warp	<b>47</b>
	Weft	<b>24</b>

# Print pattern SONG



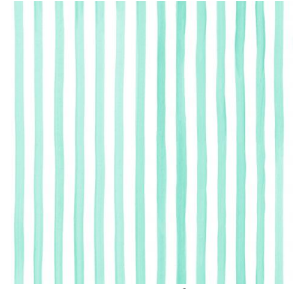
SONG Opéra 104



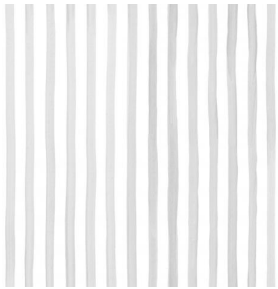
SONG Framboise 81



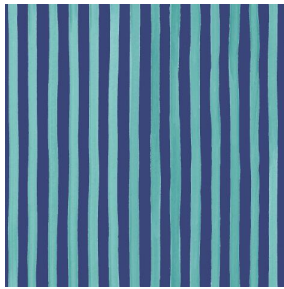
SONG Lierre 124



SONG Menthe 122



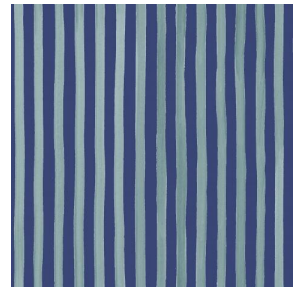
SONG Naturel 26



SONG Navy 120



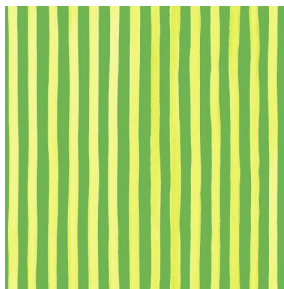
SONG Océan 91



SONG Orage 123



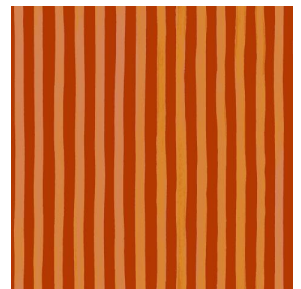
SONG Orange 15



SONG Prairie 125



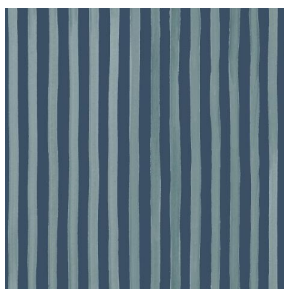
SONG Prune 84



SONG Sanguine 05



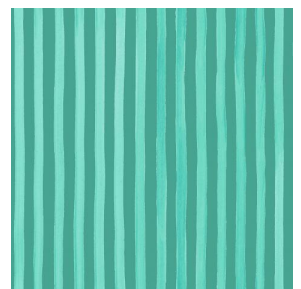
SONG Soleil 127



SONG Titanium 98



SONG Violine 105



SONG Jade 116



SONG Sapin 126



SONG Tilleul 103



SONG maïs 37



(Headquarters) SOTEXPRO - 510 route de Montchal - 42360 PANISSIÈRES - FRANCE - +33 4 77 27 60 60  
(Showroom) Le LAB' SOTEXPRO - 4 rue du Mail - 75002 PARIS - FRANCE

Non-contractual photos and colors - Indicative fitting - Fitting may vary depending on support selected