



NATTE bpi 00  
Printing support



SCOURTIN Anthracite 38  
Print pattern



Visual not taking into account the printing medium, the final rendering may vary according to the chosen medium.

## Printing support **NATTE bpi 00** Print pattern **SCOURTIN Anthracite** **38**

This light-filtering fabric serves as a print medium.

### Technical properties



Flame retardant

**Applications** Cushions - Roman blinds - Panel curtains - Bedspreads - Valences - Bed runners - Curtains

**Composition** 100% FR polyester

**Weight** 230 g/m<sup>2</sup>

**Width** 140 cm

**Fabric direction** Standard Direction

**Fitting** ↔ 0.0 cm ↓ 0.0 cm

**Maintenance advice**     

**Label** France Terre Textile / OEKO-TEX STANDARD 100

**Minimum order** 25 linear(s) meter(s)

## Technical characteristics

Flame retardant	M1 / IMO PASS	
Acoustic	Noise reduction coefficient (NRC) :	<b>0.90</b>
Optical index	Light reflexion :	<b>5 %</b>
	Light absorption :	<b>94 %</b>
	Light transmission :	<b>1 %</b>
Thermal index	Solar reflexion :	<b>39 %</b>
	Solar absorption :	<b>48 %</b>
	Solar transmission :	<b>13 %</b>
	UV transmission :	<b>0 %</b>
	Gtot :	<b>Gt 48 % Fc 69 %</b>
	Resilience	Lightfastness (units Class/8)
	Pilling	<b>5</b>
	Dimensional Stability (%)	
	Warp	<b>-2</b>
	Weft	<b>-1</b>
	Martindale (Cycles)	<b>40000</b>
	Breaking Elongation	
	Warp	<b>38</b>
	Weft	<b>21</b>
	Breaking load (daN)	
	Warp	<b>150</b>
	Weft	<b>93</b>

# Print pattern SCOURTIN



SCOURTIN Beige 63



SCOURTIN Fuchsia 33



SCOURTIN Sapin 126



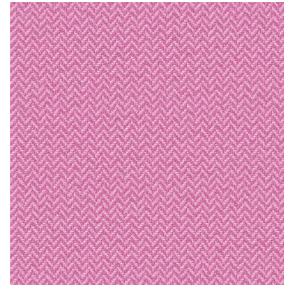
SCOURTIN Bergamote  
121



SCOURTIN Violine 105



SCOURTIN Pacifique 54



SCOURTIN Rose 129



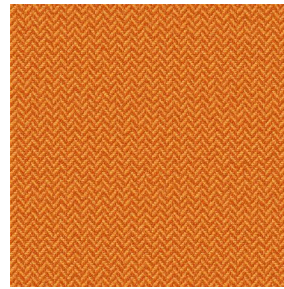
SCOURTIN Blanc 01



SCOURTIN Lin 11



SCOURTIN Naturel 26



SCOURTIN Citrouille  
136



SCOURTIN Turquoise 53



SCOURTIN Brun 23



SCOURTIN Hortensia  
134



SCOURTIN Orage 123



SCOURTIN Rubis 59



SCOURTIN Ficelle 09



SCOURTIN Maïs 37



SCOURTIN Céladon 135



SCOURTIN Ebene 113



(Headquarters) SOTEXPRO - 510 route de Montchal - 42360 PANISSIÈRES - FRANCE - +33 4 77 27 60 60  
(Showroom) Le LAB' SOTEXPRO - 4 rue du Mail - 75002 PARIS - FRANCE

Non-contractual photos and colors - Indicative fitting - Fitting may vary depending on support selected

## Print pattern SCOURTIN



SCOURTIN Tourterelle  
138



SCOURTIN Titanium 98



SCOURTIN Lagon 110



SCOURTIN Gris 97



(Headquarters) SOTEXPRO - 510 route de Montchal - 42360 PANISSIÈRES - FRANCE - +33 4 77 27 60 60  
(Showroom) Le LAB' SOTEXPRO - 4 rue du Mail - 75002 PARIS - FRANCE

Non-contractual photos and colors - Indicative fitting - Fitting may vary depending on support selected