



**NATTE bpi 00**  
Printing support



**MELODY Ficelle 09**  
Print pattern



Visual not taking into account the printing medium, the final rendering may vary according to the chosen medium.

## Printing support **NATTE bpi 00** Print pattern **MELODY Ficelle 09**

This light-filtering fabric serves as a print medium.

### Technical properties



Flame retardant

**Applications** Roman blinds - Panel curtains - Bedspreads - Valences - Bed runners  
- Curtains - Cushions

**Composition** 100% FR polyester

**Weight** 230 g/m<sup>2</sup>

**Width** 140 cm

**Fabric direction** Standard Direction

**Fitting** ↔ 0,0 cm ↓ 0,0 cm

**Maintenance advice**     

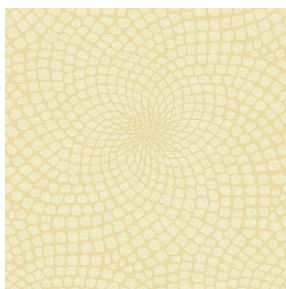
**Label** France Terre Textile / OEKO-TEX STANDARD 100

**Minimum order** 25 linear(s) meter(s)

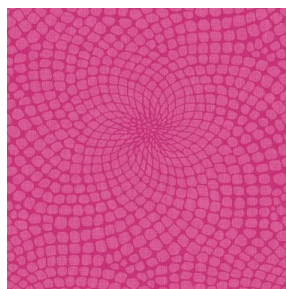
## Technical characteristics

Flame retardant	M1 / IMO PASS	
Acoustic	Noise reduction coefficient (NRC) :	<b>0.90</b>
Optical index	Light reflexion :	<b>5 %</b>
	Light absorption :	<b>94 %</b>
	Light transmission :	<b>1 %</b>
Thermal index	Solar reflexion :	<b>39 %</b>
	Solar absorption :	<b>48 %</b>
	Solar transmission :	<b>13 %</b>
	UV transmission :	<b>0 %</b>
	Gtot :	<b>Gt 48 % Fc 69 %</b>
Resilience	Lightfastness (units Class/8)	<b>5</b>
	Pilling	<b>5</b>
	Dimensional Stability (%)	
	Warp	<b>-2</b>
	Weft	<b>-1</b>
	Martindale (Cycles)	<b>40000</b>
	Breaking Elongation	
	Warp	<b>38</b>
	Weft	<b>21</b>
	Breaking load (daN)	
	Warp	<b>150</b>
	Weft	<b>93</b>

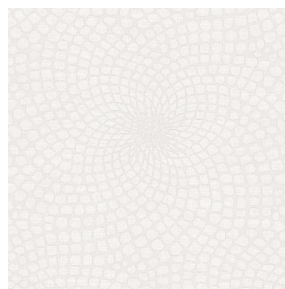
# Print pattern MELODY



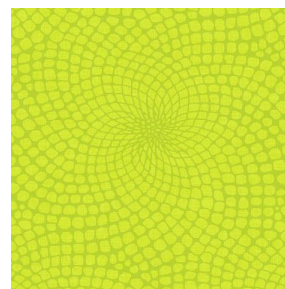
MELODY Vanille 51



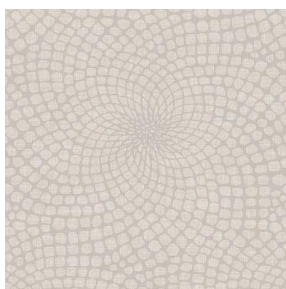
MELODY Fuchsia 33



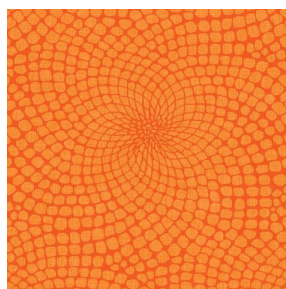
MELODY Naturel 26



MELODY Anis 62



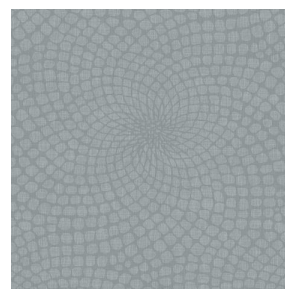
MELODY Lin 11



MELODY Orange 15



MELODY Turquoise 53



MELODY Acier 18



(Headquarters) SOTEXPRO - 510 route de Montchal - 42360 PANISSIÈRES - FRANCE - +33 4 77 27 60 60  
(Showroom) Le LAB' SOTEXPRO - 4 rue du Mail - 75002 PARIS - FRANCE

*Non-contractual photos and colors - Indicative fitting - Fitting may vary depending on support selected*