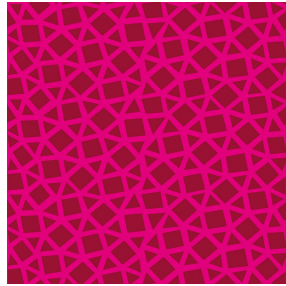


**NATTE bpi 00**  
Printing support



Visual not taking into account the printing medium, the final rendering may vary according to the chosen medium.



**PEKKA Grenat 56**  
Print pattern

## Printing support **NATTE bpi 00** Print pattern **PEKKA Grenat 56**

This light-filtering fabric serves as a print medium.

### Technical properties



Flame retardant

**Applications** Roman blinds - Panel curtains - Bedspreads - Valences - Bed runners  
- Curtains - Cushions

**Composition** 100% FR polyester

**Weight** 230 g/m<sup>2</sup>

**Width** 140 cm

**Fabric direction** Standard Direction

**Fitting** ↔ 18.0 cm ↓ 6.0 cm

**Maintenance advice**

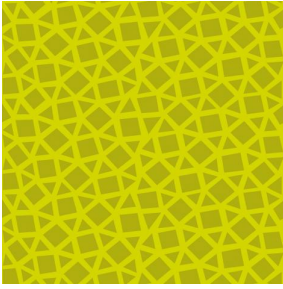
**Label** France Terre Textile / OEKO-TEX STANDARD 100

**Minimum order** 25 linear(s) metter(s)

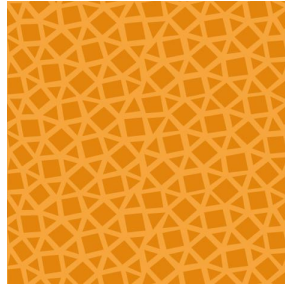
## Technical characteristics

|                 |                                     |                        |
|-----------------|-------------------------------------|------------------------|
| Flame retardant | M1 / IMO PASS                       |                        |
| Acoustic        | Noise reduction coefficient (NRC) : | <b>0.90</b>            |
| Optical index   | Light reflexion :                   | <b>5 %</b>             |
|                 | Light absorption :                  | <b>94 %</b>            |
|                 | Light transmission :                | <b>1 %</b>             |
| Thermal index   | Solar reflexion :                   | <b>39 %</b>            |
|                 | Solar absorption :                  | <b>48 %</b>            |
|                 | Solar transmission :                | <b>13 %</b>            |
|                 | UV transmission :                   | <b>0 %</b>             |
|                 | Gtot :                              | <b>Gt 48 % Fc 69 %</b> |
| Resilience      | Lightfastness (units Class/8)       | <b>5</b>               |
|                 | Pilling                             | <b>5</b>               |
|                 | Dimentional Stability (%)           |                        |
|                 | Warp                                | <b>-2</b>              |
|                 | Weft                                | <b>-1</b>              |
|                 | Martindale (Cycles)                 | <b>40000</b>           |
|                 | Breaking Elongation                 |                        |
|                 | Warp                                | <b>38</b>              |
|                 | Weft                                | <b>21</b>              |
|                 | Breaking load (daN)                 |                        |
|                 | Warp                                | <b>150</b>             |
|                 | Weft                                | <b>93</b>              |

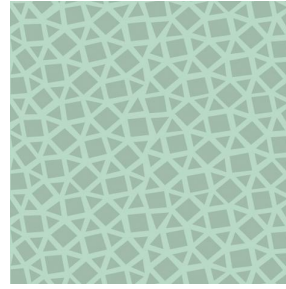
## Print pattern PEKKA



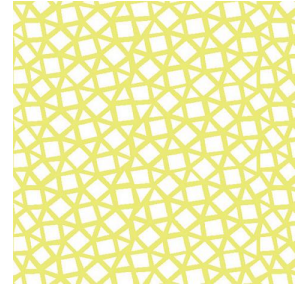
PEKKA Anis 62



PEKKA Orange 15



PEKKA Turquoise 53



PEKKA cactus 36



(Headquarters) SOTEXPRO - 510 route de Montchal - 42360 PANISSIÈRES - FRANCE - +33 4 77 27 60 60  
(Showroom) Le LAB' SOTEXPRO - 4 rue du Mail - 75002 PARIS - FRANCE

Non-contractual photos and colors - Indicative fitting - Fitting may vary depending on support selected