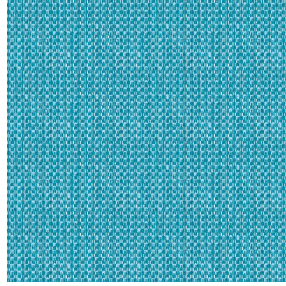




NATTE bpi 00
Printing support



RIVE Turquoise 53
Print pattern



Visual not taking into account the printing medium, the final rendering may vary according to the chosen medium.

Printing support **NATTE bpi 00** Print pattern **RIVE Turquoise 53**

This light-filtering fabric serves as a print medium.

Technical properties



Flame retardant

Applications Roman blinds - Panel curtains - Bedspreads - Valences - Bed runners
- Curtains - Cushions

Composition 100% FR polyester

Weight 230 g/m²

Width 280 cm

Fabric direction Room High Direction

Fitting ↔ 0,0 cm ↓ 0,0 cm

Maintenance advice     

Label France Terre Textile / OEKO-TEX STANDARD 100

Minimum order 25 linear(s) metter(s)

Technical characteristics

Flame retardant	M1 / IMO PASS	
Acoustic	Noise reduction coefficient (NRC) :	0.90
Optical index	Light reflexion :	5 %
	Light absorption :	94 %
	Light transmission :	1 %
Thermal index	Solar reflexion :	39 %
	Solar absorption :	48 %
	Solar transmission :	13 %
	UV transmission :	0 %
	Gtot :	Gt 48 % Fc 69 %
Resilience	Lightfastness (units Class/8)	5
	Pilling	5
	Dimentional Stability (%)	
	Warp	-2
	Weft	-1
	Martindale (Cycles)	40000
	Breaking Elongation	
	Warp	38
	Weft	21
	Breaking load (daN)	
	Warp	150
	Weft	93

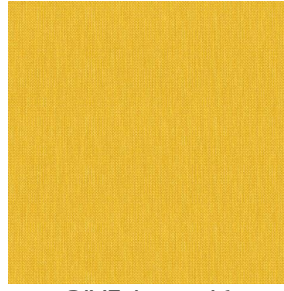
Print pattern RIVE



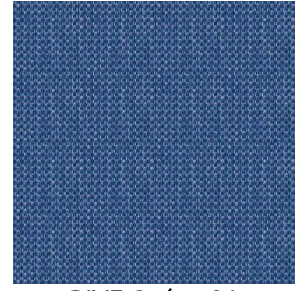
RIVE Fuchsia 33



RIVE Bleu 41



RIVE Jaune 46



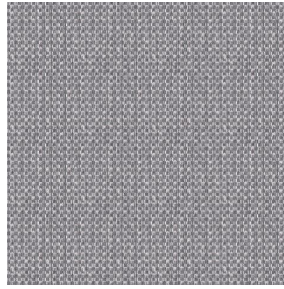
RIVE Océan 91



RIVE Sable 67



RIVE Taupe 95



RIVE Gris 97



(Headquarters) SOTEXPRO - 510 route de Montchal - 42360 PANISSIÈRES - FRANCE - +33 4 77 27 60 60
(Showroom) Le LAB' SOTEXPRO - 4 rue du Mail - 75002 PARIS - FRANCE

Non-contractual photos and colors - Indicative fitting - Fitting may vary depending on support selected