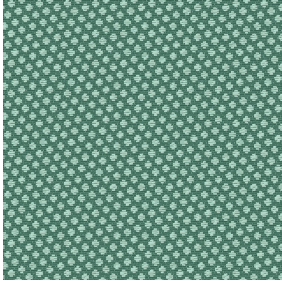




NATTE bpi 00  
Printing support



GONIDIE Céladon 135  
Print pattern



Visual not taking into account the printing medium, the final rendering may vary according to the chosen medium.

## Printing support **NATTE bpi 00** Print pattern **GONIDIE Céladon 135**

This light-filtering fabric serves as a print medium.

### Technical properties



Flame retardant

**Applications** Roman blinds - Panel curtains - Bedspreads - Valences - Bed runners  
- Curtains - Cushions

**Composition** 100% FR polyester

**Weight** 230 g/m<sup>2</sup>

**Width** 280 cm

**Fabric direction** Room High Direction

**Fitting** ↔ 0,0 cm ↓ 0,0 cm

**Maintenance advice**     

**Label** France Terre Textile / OEKO-TEX STANDARD 100

**Minimum order** 25 linear(s) metter(s)

## Technical characteristics

|                 |                                     |                               |
|-----------------|-------------------------------------|-------------------------------|
| Flame retardant | M1 / IMO PASS                       |                               |
| Acoustic        | Noise reduction coefficient (NRC) : | <b>0.90</b>                   |
| Optical index   | Light reflexion :                   | <b>5 %</b>                    |
|                 | Light absorption :                  | <b>94 %</b>                   |
|                 | Light transmission :                | <b>1 %</b>                    |
| Thermal index   | Solar reflexion :                   | <b>39 %</b>                   |
|                 | Solar absorption :                  | <b>48 %</b>                   |
|                 | Solar transmission :                | <b>13 %</b>                   |
|                 | UV transmission :                   | <b>0 %</b>                    |
|                 | Gtot :                              | <b>Gt 48 % Fc 69 %</b>        |
|                 | Resilience                          | Lightfastness (units Class/8) |
|                 | Pilling                             | <b>5</b>                      |
|                 | Dimentional Stability (%)           |                               |
|                 | Warp                                | <b>-2</b>                     |
|                 | Weft                                | <b>-1</b>                     |
|                 | Martindale (Cycles)                 | <b>40000</b>                  |
|                 | Breaking Elongation                 |                               |
|                 | Warp                                | <b>38</b>                     |
|                 | Weft                                | <b>21</b>                     |
|                 | Breaking load (daN)                 |                               |
|                 | Warp                                | <b>150</b>                    |
|                 | Weft                                | <b>93</b>                     |

# Print pattern GONIDIE



GONIDIE Souris 31



GONIDIE Beige 63



GONIDIE Citrouille 136



GONIDIE Glacier 43



GONIDIE Noir 10



GONIDIE Anis 62



GONIDIE Perle 96



GONIDIE Mousse 92



GONIDIE Tourterelle  
138



GONIDIE Brique 42



GONIDIE Opéra 104



GONIDIE Pacifique 54



GONIDIE Brun 23



GONIDIE Crème 32



GONIDIE Taupe 95



GONIDIE Lin 11



GONIDIE Lierre 124



GONIDIE Bergamote  
121



GONIDIE Hortensia 134



GONIDIE Vieux rose 64



(Headquarters) SOTEXPRO - 510 route de Montchal - 42360 PANISSIÈRES - FRANCE - +33 4 77 27 60 60  
(Showroom) Le LAB' SOTEXPRO - 4 rue du Mail - 75002 PARIS - FRANCE

Non-contractual photos and colors - Indicative fitting - Fitting may vary depending on support selected

## Print pattern GONIDIE



GONIDIE Emeraude 88



GONIDIE Fuchsia 33



GONIDIE Ebene 113



GONIDIE Ficelle 09



(Headquarters) SOTEXPRO - 510 route de Montchal - 42360 PANISSIÈRES - FRANCE - +33 4 77 27 60 60  
(Showroom) Le LAB' SOTEXPRO - 4 rue du Mail - 75002 PARIS - FRANCE

Non-contractual photos and colors - Indicative fitting - Fitting may vary depending on support selected