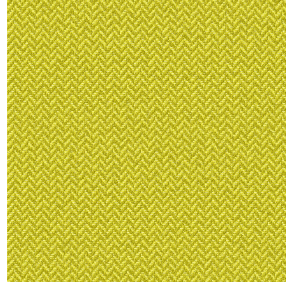




NATTE bpi 00  
Printing support



SCOURTIN Bergamote 121  
Print pattern



Visual not taking into account the printing medium, the final rendering may vary according to the chosen medium.

## Printing support **NATTE bpi 00** Print pattern **SCOURTIN Bergamote 121**

This light-filtering fabric serves as a print medium.

### Technical properties



Flame retardant

**Applications** Roman blinds - Panel curtains - Bedspreads - Valences - Bed runners  
- Curtains - Cushions

**Composition** 100% FR polyester

**Weight** 230 g/m<sup>2</sup>

**Width** 280 cm

**Fabric direction** Room High Direction

**Fitting** ↔ 0.0 cm ↓ 0.0 cm

**Maintenance advice**     

**Label** France Terre Textile / OEKO-TEX STANDARD 100

**Minimum order** 25 linear(s) meter(s)

## Technical characteristics

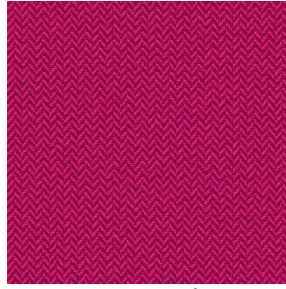
|                 |                                     |                               |
|-----------------|-------------------------------------|-------------------------------|
| Flame retardant | M1 / IMO PASS                       |                               |
| Acoustic        | Noise reduction coefficient (NRC) : | <b>0.90</b>                   |
| Optical index   | Light reflexion :                   | <b>5 %</b>                    |
|                 | Light absorption :                  | <b>94 %</b>                   |
|                 | Light transmission :                | <b>1 %</b>                    |
| Thermal index   | Solar reflexion :                   | <b>39 %</b>                   |
|                 | Solar absorption :                  | <b>48 %</b>                   |
|                 | Solar transmission :                | <b>13 %</b>                   |
|                 | UV transmission :                   | <b>0 %</b>                    |
|                 | Gtot :                              | <b>Gt 48 % Fc 69 %</b>        |
|                 | Resilience                          | Lightfastness (units Class/8) |
|                 | Pilling                             | <b>5</b>                      |
|                 | Dimensional Stability (%)           |                               |
|                 | Warp                                | <b>-2</b>                     |
|                 | Weft                                | <b>-1</b>                     |
|                 | Martindale (Cycles)                 | <b>40000</b>                  |
|                 | Breaking Elongation                 |                               |
|                 | Warp                                | <b>38</b>                     |
|                 | Weft                                | <b>21</b>                     |
|                 | Breaking load (daN)                 |                               |
|                 | Warp                                | <b>150</b>                    |
|                 | Weft                                | <b>93</b>                     |



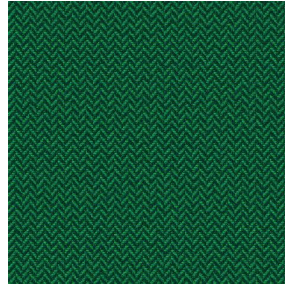
# Print pattern SCOURTIN



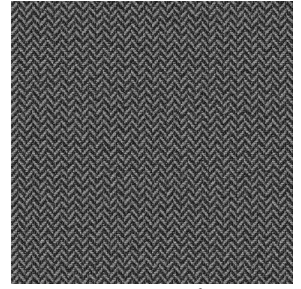
SCOURTIN Beige 63



SCOURTIN Fuchsia 33



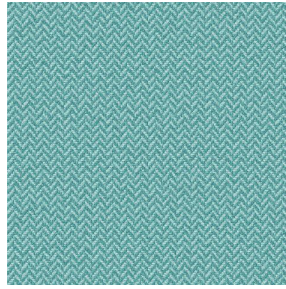
SCOURTIN Sapin 126



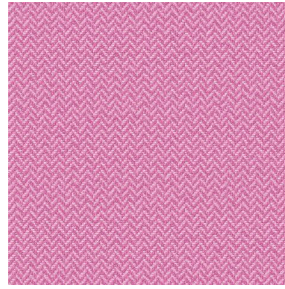
SCOURTIN Anthracite  
38



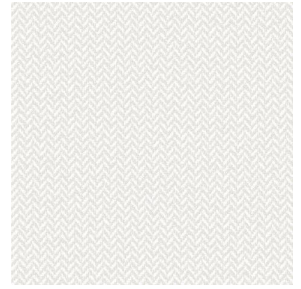
SCOURTIN Violine 105



SCOURTIN Pacifique 54



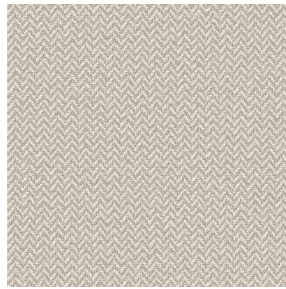
SCOURTIN Rose 129



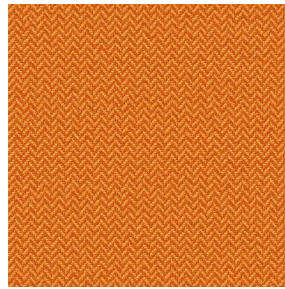
SCOURTIN Blanc 01



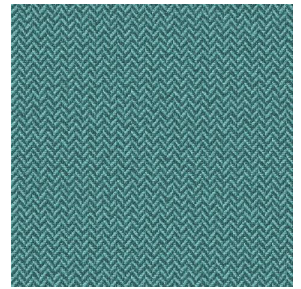
SCOURTIN Lin 11



SCOURTIN Naturel 26



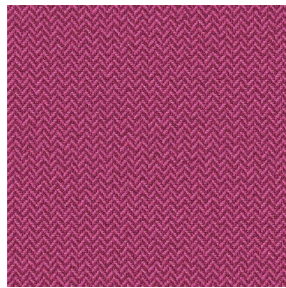
SCOURTIN Citrouille  
136



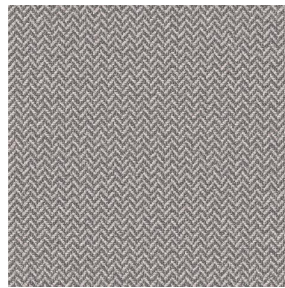
SCOURTIN Turquoise 53



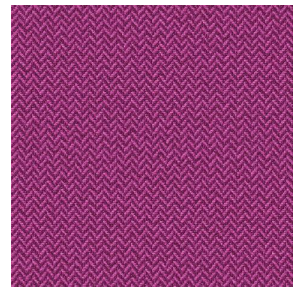
SCOURTIN Brun 23



SCOURTIN Hortensia  
134



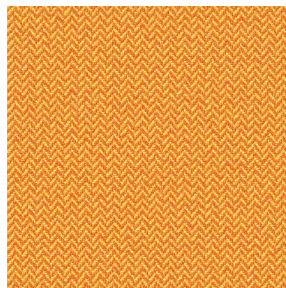
SCOURTIN Orage 123



SCOURTIN Rubis 59



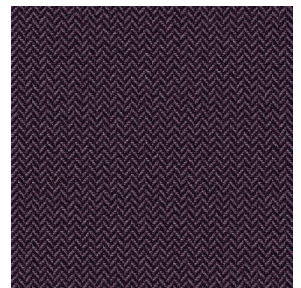
SCOURTIN Ficelle 09



SCOURTIN Maïs 37



SCOURTIN Céladon 135



SCOURTIN Ebene 113



(Headquarters) SOTEXPRO - 510 route de Montchal - 42360 PANISSIÈRES - FRANCE - +33 4 77 27 60 60  
(Showroom) Le LAB' SOTEXPRO - 4 rue du Mail - 75002 PARIS - FRANCE

Non-contractual photos and colors - Indicative fitting - Fitting may vary depending on support selected



## Print pattern SCOURTIN



SCOURTIN Tourterelle  
138



SCOURTIN Titanium 98



SCOURTIN Lagon 110



SCOURTIN Gris 97



(Headquarters) SOTEXPRO - 510 route de Montchal - 42360 PANISSIÈRES - FRANCE - +33 4 77 27 60 60  
(Showroom) Le LAB' SOTEXPRO - 4 rue du Mail - 75002 PARIS - FRANCE

Non-contractual photos and colors - Indicative fitting - Fitting may vary depending on support selected