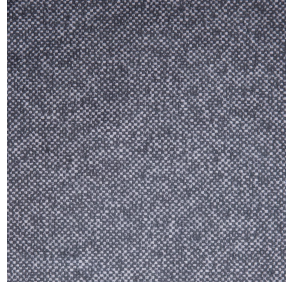




NATTE bpi 00
Printing support



ANATOLE Taupe 95
Print pattern



Visual not taking into account the printing medium, the final rendering may vary according to the chosen medium.

Printing support **NATTE bpi 00** Print pattern **ANATOLE Taupe 95**

This light-filtering fabric serves as a print medium.

Technical properties



Flame retardant

Applications Roman blinds - Panel curtains - Bedspreads - Valences - Bed runners
- Curtains - Cushions

Composition 100% FR polyester

Weight 230 g/m²

Width 280 cm

Fabric direction Room High Direction

Fitting ↔ 0,0 cm ↓ 0,0 cm

Maintenance advice     

Label France Terre Textile / OEKO-TEX STANDARD 100

Minimum order 25 linear(s) metter(s)

Technical characteristics

Flame retardant	M1 / IMO PASS	
Acoustic	Noise reduction coefficient (NRC) :	0.90
Optical index	Light reflexion :	5 %
	Light absorption :	94 %
	Light transmission :	1 %
Thermal index	Solar reflexion :	39 %
	Solar absorption :	48 %
	Solar transmission :	13 %
	UV transmission :	0 %
	Gtot :	Gt 48 % Fc 69 %
	Resilience	Lightfastness (units Class/8)
	Pilling	5
	Dimentional Stability (%)	
	Warp	-2
	Weft	-1
	Martindale (Cycles)	40000
	Breaking Elongation	
	Warp	38
	Weft	21
	Breaking load (daN)	
	Warp	150
	Weft	93

Print pattern ANATOLE



ANATOLE Naturel 26



ANATOLE lin 11



ANATOLE Ficelle 09



ANATOLE Celadon 135



ANATOLE Océan 91



ANATOLE Titanium 98



ANATOLE Cactus 36



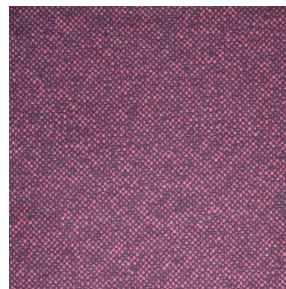
ANATOLE mousse 92



ANATOLE Or 94



ANATOLE Chaudron
118



ANATOLE Amarante
108



(Headquarters) SOTEXPRO - 510 route de Montchal - 42360 PANISSIÈRES - FRANCE - +33 4 77 27 60 60
(Showroom) Le LAB' SOTEXPRO - 4 rue du Mail - 75002 PARIS - FRANCE

Non-contractual photos and colors - Indicative fitting - Fitting may vary depending on support selected