



NATTE bpi 00
Printing support



SCOURTIN Gris 97
Print pattern



Visual not taking into account the printing medium, the final rendering may vary according to the chosen medium.

Printing support **NATTE bpi 00** Print pattern **SCOURTIN Gris 97**

This light-filtering fabric serves as a print medium.

Technical properties



Flame retardant

Applications Roman blinds - Panel curtains - Bedspreads - Valences - Bed runners
- Curtains - Cushions

Composition 100% FR polyester

Weight 230 g/m²

Width 280 cm

Fabric direction Room High Direction

Fitting ↔ 0,0 cm ↓ 0,0 cm

Maintenance advice     

Label France Terre Textile / OEKO-TEX STANDARD 100

Minimum order 25 linear(s) metter(s)

Technical characteristics

| | | |
|-----------------|-------------------------------------|-------------------------------|
| Flame retardant | M1 / IMO PASS | |
| Acoustic | Noise reduction coefficient (NRC) : | 0.90 |
| Optical index | Light reflexion : | 5 % |
| | Light absorption : | 94 % |
| | Light transmission : | 1 % |
| Thermal index | Solar reflexion : | 39 % |
| | Solar absorption : | 48 % |
| | Solar transmission : | 13 % |
| | UV transmission : | 0 % |
| | Gtot : | Gt 48 % Fc 69 % |
| | Resilience | Lightfastness (units Class/8) |
| | Pilling | 5 |
| | Dimentional Stability (%) | |
| | Warp | -2 |
| | Weft | -1 |
| | Martindale (Cycles) | 40000 |
| | Breaking Elongation | |
| | Warp | 38 |
| | Weft | 21 |
| | Breaking load (daN) | |
| | Warp | 150 |
| | Weft | 93 |

Print pattern SCOURTIN



SCOURTIN Beige 63



SCOURTIN Fuchsia 33



SCOURTIN Sapin 126



SCOURTIN Bergamote
121



SCOURTIN Anthracite
38



SCOURTIN Violine 105



SCOURTIN Pacifique 54



SCOURTIN Rose 129



SCOURTIN Blanc 01



SCOURTIN Lin 11



SCOURTIN Naturel 26



SCOURTIN Citrouille
136



SCOURTIN Turquoise 53



SCOURTIN Brun 23



SCOURTIN Hortensia
134



SCOURTIN Orage 123



SCOURTIN Rubis 59



SCOURTIN Ficelle 09



SCOURTIN Maïs 37



SCOURTIN Céladon 135



(Headquarters) SOTEXPRO - 510 route de Montchal - 42360 PANISSIÈRES - FRANCE - +33 4 77 27 60 60
(Showroom) Le LAB' SOTEXPRO - 4 rue du Mail - 75002 PARIS - FRANCE

Non-contractual photos and colors - Indicative fitting - Fitting may vary depending on support selected

Print pattern SCOURTIN



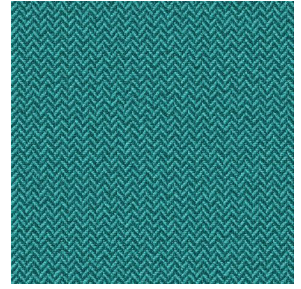
SCOURTIN Ebene 113



SCOURTIN Tourterelle
138



SCOURTIN Titanium 98



SCOURTIN Lagon 110



(Headquarters) SOTEXPRO - 510 route de Montchal - 42360 PANISSIÈRES - FRANCE - +33 4 77 27 60 60
(Showroom) Le LAB' SOTEXPRO - 4 rue du Mail - 75002 PARIS - FRANCE

Non-contractual photos and colors - Indicative fitting - Fitting may vary depending on support selected