



**NATTE bpi 00**  
Printing support



**MELODY Ficelle 09**  
Print pattern



Visual not taking into account the printing medium, the final rendering may vary according to the chosen medium.

## Printing support **NATTE bpi 00** Print pattern **MELODY Ficelle 09**

This light-filtering fabric serves as a print medium.

### Technical properties



Flame retardant

**Applications** Roman blinds - Panel curtains - Bedspreads - Valences - Bed runners  
- Curtains - Cushions

**Composition** 100% FR polyester

**Weight** 230 g/m<sup>2</sup>

**Width** 280 cm

**Fabric direction** Room High Direction

**Fitting** ↔ 0,0 cm ↓ 0,0 cm

**Maintenance advice**     

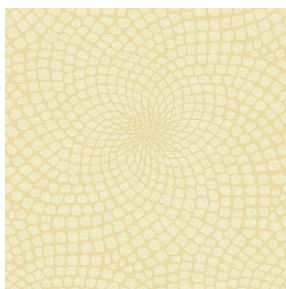
**Label** France Terre Textile / OEKO-TEX STANDARD 100

**Minimum order** 25 linear(s) metter(s)

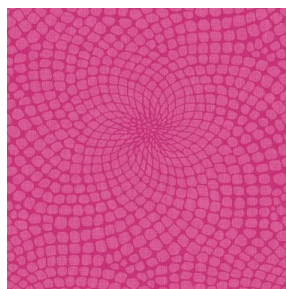
## Technical characteristics

|                 |                                     |                               |
|-----------------|-------------------------------------|-------------------------------|
| Flame retardant | M1 / IMO PASS                       |                               |
| Acoustic        | Noise reduction coefficient (NRC) : | <b>0.90</b>                   |
| Optical index   | Light reflexion :                   | <b>5 %</b>                    |
|                 | Light absorption :                  | <b>94 %</b>                   |
|                 | Light transmission :                | <b>1 %</b>                    |
| Thermal index   | Solar reflexion :                   | <b>39 %</b>                   |
|                 | Solar absorption :                  | <b>48 %</b>                   |
|                 | Solar transmission :                | <b>13 %</b>                   |
|                 | UV transmission :                   | <b>0 %</b>                    |
|                 | Gtot :                              | <b>Gt 48 % Fc 69 %</b>        |
|                 | Resilience                          | Lightfastness (units Class/8) |
|                 | Pilling                             | <b>5</b>                      |
|                 | Dimensional Stability (%)           |                               |
|                 | Warp                                | <b>-2</b>                     |
|                 | Weft                                | <b>-1</b>                     |
|                 | Martindale (Cycles)                 | <b>40000</b>                  |
|                 | Breaking Elongation                 |                               |
|                 | Warp                                | <b>38</b>                     |
|                 | Weft                                | <b>21</b>                     |
|                 | Breaking load (daN)                 |                               |
|                 | Warp                                | <b>150</b>                    |
|                 | Weft                                | <b>93</b>                     |

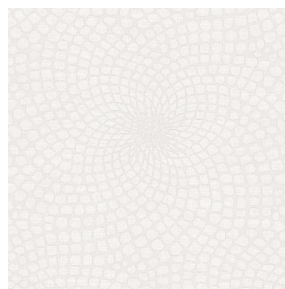
# Print pattern MELODY



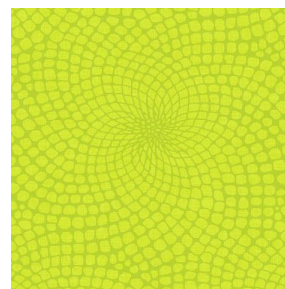
MELODY Vanille 51



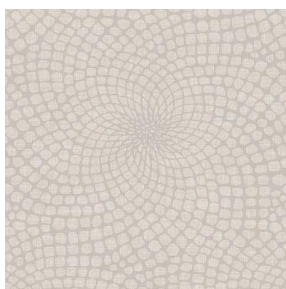
MELODY Fuchsia 33



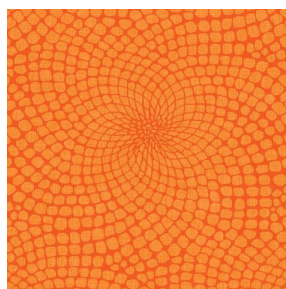
MELODY Naturel 26



MELODY Anis 62



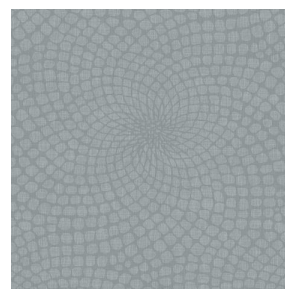
MELODY Lin 11



MELODY Orange 15



MELODY Turquoise 53



MELODY Acier 18



(Headquarters) SOTEXPRO - 510 route de Montchal - 42360 PANISSIÈRES - FRANCE - +33 4 77 27 60 60  
(Showroom) Le LAB' SOTEXPRO - 4 rue du Mail - 75002 PARIS - FRANCE

*Non-contractual photos and colors - Indicative fitting - Fitting may vary depending on support selected*