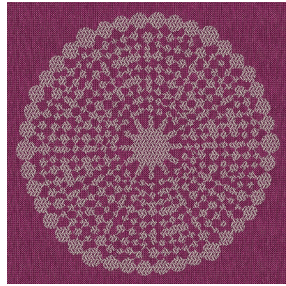


NATTE bpi 00
Printing support



ANGELE Prune 84
Print pattern



Visual not taking into account the printing medium, the final rendering may vary according to the chosen medium.

Printing support **NATTE bpi 00** Print pattern **ANGELE Prune 84**

This light-filtering fabric serves as a print medium.

Technical properties



Flame retardant

Applications Roman blinds - Panel curtains - Bedspreads - Valences - Bed runners
- Curtains - Cushions

Composition 100% FR polyester

Weight 230 g/m²

Width 280 cm

Fabric direction Room High Direction

Fitting ↔ 30.0 cm ↓ 30.0 cm

Maintenance advice     

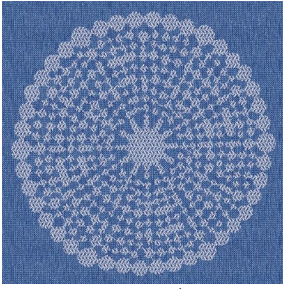
Label France Terre Textile / OEKO-TEX STANDARD 100

Minimum order 25 linear(s) metter(s)

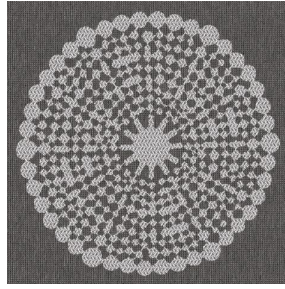
Technical characteristics

| | | |
|-----------------|-------------------------------------|------------------------|
| Flame retardant | M1 / IMO PASS | |
| Acoustic | Noise reduction coefficient (NRC) : | 0.90 |
| Optical index | Light reflexion : | 5 % |
| | Light absorption : | 94 % |
| | Light transmission : | 1 % |
| Thermal index | Solar reflexion : | 39 % |
| | Solar absorption : | 48 % |
| | Solar transmission : | 13 % |
| | UV transmission : | 0 % |
| | Gtot : | Gt 48 % Fc 69 % |
| Resilience | Lightfastness (units Class/8) | 5 |
| | Pilling | 5 |
| | Dimentional Stability (%) | |
| | Warp | -2 |
| | Weft | -1 |
| | Martindale (Cycles) | 40000 |
| | Breaking Elongation | |
| | Warp | 38 |
| | Weft | 21 |
| | Breaking load (daN) | |
| | Warp | 150 |
| | Weft | 93 |

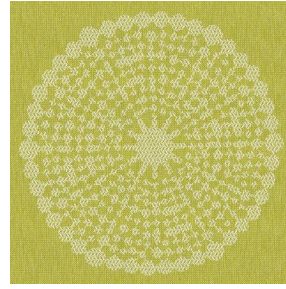
Print pattern ANGELE



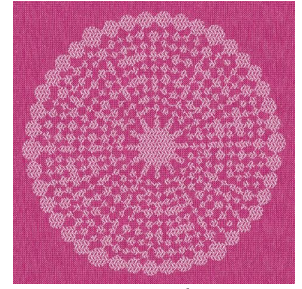
ANGELE Océan 91



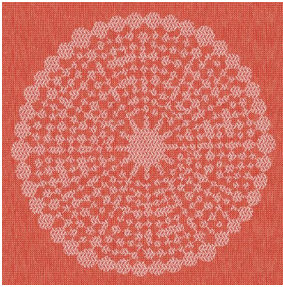
ANGELE Taupe 95



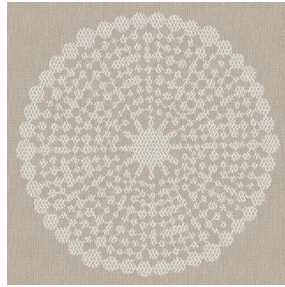
ANGELE Anis 62



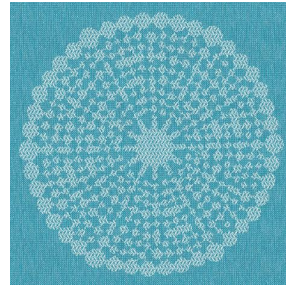
ANGELE Fuchsia 33



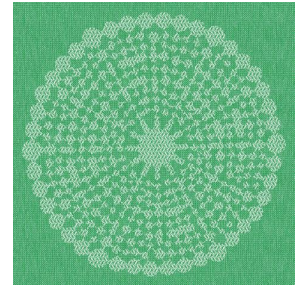
ANGELE Orange 15



ANGELE Sable 67



ANGELE Turquoise 53



ANGELE Vert 24



(Headquarters) SOTEXPRO - 510 route de Montchal - 42360 PANISSIÈRES - FRANCE - +33 4 77 27 60 60
(Showroom) Le LAB' SOTEXPRO - 4 rue du Mail - 75002 PARIS - FRANCE

Non-contractual photos and colors - Indicative fitting - Fitting may vary depending on support selected