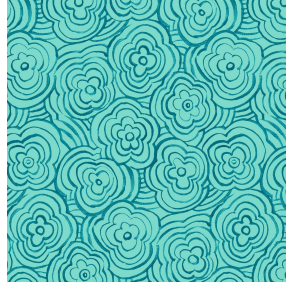




NOCAV BPI 00
Printing support



ONDES Turquoise 53
Print pattern



Printing support **NOCAV BPI 00** Print pattern **ONDES Turquoise 53**

Unclassified blackout print support

Technical properties

Applications Roman blinds - Panel curtains - Curtains






Composition 100% polyester with white flocked acrylic backing

Weight 390 g/m²

Width 273 cm

Fabric direction Room High Direction

Fitting ↔ 25.0 cm ↓ 20.0 cm

Maintenance advice     

Label

Minimum order 25 linear(s) meter(s)



Visual not taking into account the printing medium, the final rendering may vary according to the chosen medium.

Technical characteristics

Resilience

Dimensional Stability (%)

Warp **0**

Weft **0**

Breaking Elongation

Warp **38**

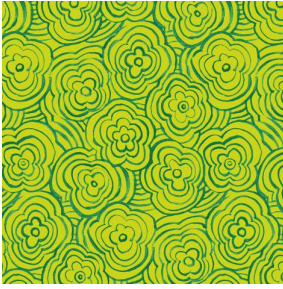
Weft **38**

Breaking load (daN)

Warp **170**

Weft **120**

Print pattern ONDES



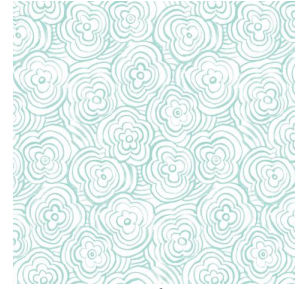
ONDES Anis 62



ONDES Opéra 104



ONDES Violine 105



ONDES glacier 43



(Headquarters) SOTEXPRO - 510 route de Montchal - 42360 PANISSIÈRES - FRANCE - +33 4 77 27 60 60
(Showroom) Le LAB' SOTEXPRO - 4 rue du Mail - 75002 PARIS - FRANCE

Non-contractual photos and colors - Indicative fitting - Fitting may vary depending on support selected