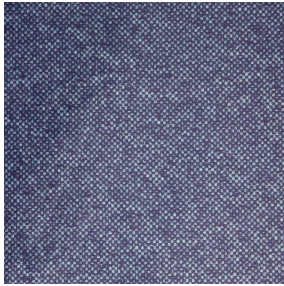
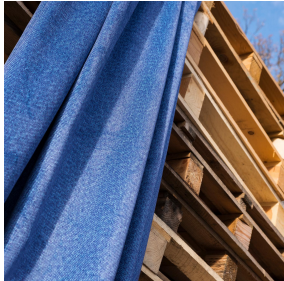


NOCAV BPI 00
Printing support








ANATOLE Océan 91
Print pattern




Printing support **NOCAV BPI 00** Print pattern **ANATOLE Océan 91**

Unclassified blackout print support

Technical properties

- Applications** Roman blinds - Panel curtains - Curtains
- Composition** 100% polyester with white flocked acrylic backing
- Weight** 390 g/m²
- Width** 273 cm
- Fabric direction** Room High Direction
- Fitting** ↔ cm ↓ cm
- Maintenance advice**     
- Label**
- Minimum order** 25 linear(s) metter(s)

 Visual not taking into account the printing medium, the final rendering may vary according to the chosen medium.

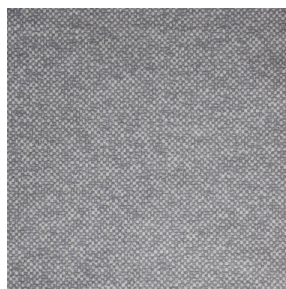
Technical characteristics

Resilience	Dimentional Stability (%)	
	Warp	0
	Weft	0
	Breaking Elongation	
	Warp	38
	Weft	38
	Breaking load (daN)	
	Warp	170
	Weft	120

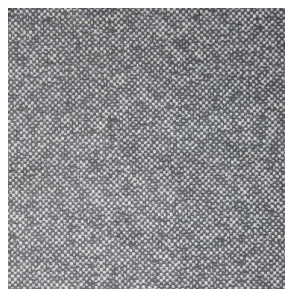
Print pattern ANATOLE



ANATOLE Naturel 26



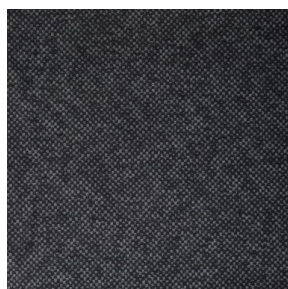
ANATOLE lin 11



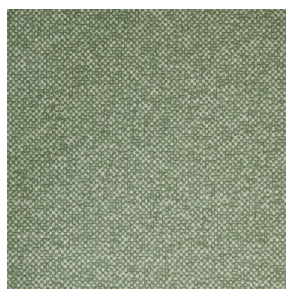
ANATOLE Ficelle 09



ANATOLE Celadon 135



ANATOLE Titanium 98



ANATOLE Cactus 36



ANATOLE mousse 92



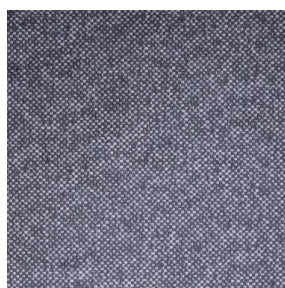
ANATOLE Or 94



ANATOLE Chaudron
118



ANATOLE Amarante
108



ANATOLE Taupe 95



(Headquarters) SOTEXPRO - 510 route de Montchal - 42360 PANISSIÈRES - FRANCE - +33 4 77 27 60 60
(Showroom) Le LAB' SOTEXPRO - 4 rue du Mail - 75002 PARIS - FRANCE

Non-contractual photos and colors - Indicative fitting - Fitting may vary depending on support selected