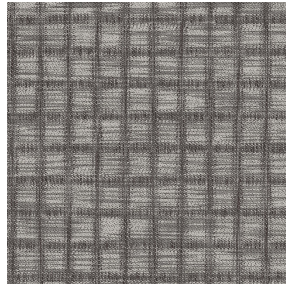




**NOCLIN NATUREL 26**  
Printing support



**ECUME Taupe 95**  
Print pattern



Visual not taking into account the printing medium, the final rendering may vary according to the chosen medium.

## Printing support **NOCLIN NATUREL 26**

### Print pattern **ECUME Taupe 95**

Blackout double-side, linen and textured effect, the Noclin is also available as a printing support, to bring depth and relief to your patterns, please note : the beige background may modify the final appearance.

#### Technical properties



Flame retardant



Thermal

**Applications** Roman blinds - Panel curtains - Curtains

**Composition** Polyester enduction acrylique

**Weight** 380 g/m<sup>2</sup>

**Width** 280 cm

**Fabric direction** Room High Direction

**Fitting** ↔ 20.0 cm ↓ 22.0 cm

**Maintenance advice**

**Label**

**Minimum order** 25 linear(s) metter(s)

## Technical characteristics

Flame retardant	B1 / IMO PASS		
Optical index	Light reflexion :	53 %	
	Light absorption :	47 %	
	Light transmission :	0 %	
Thermal index	Solar reflexion :	64 %	
	Solar absorption :	36 %	
	Solar transmission :	0 %	
	UV transmission :	0 %	
	Gtot :	Gt 36 % Fc 61 %	
	Resilience	Lightfastness (units Class/8)	4
Dimentional Stability (%)		Warp	-1
		Weft	-1
Breaking Elongation		Warp	48
		Weft	72
Breaking load (daN)		Warp	51
		Weft	84

# Print pattern ECUME



ECUME Turquoise 53



(Headquarters) SOTEXPRO - 510 route de Montchal - 42360 PANISSIÈRES - FRANCE - +33 4 77 27 60 60

Non-contractual photos and colors - Indicative fitting - Fitting may vary depending on support selected