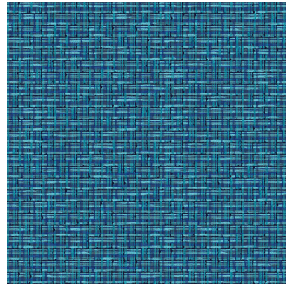




NOCLIN NATUREL 26
Printing support



SALIN Océan 91
Print pattern



Visual not taking into account the printing medium, the final rendering may vary according to the chosen medium.

Printing support **NOCLIN NATUREL 26**

Print pattern **SALIN Océan 91**

Blackout double-side, linen and textured effect, the Noclin is also available as a printing support, to bring depth and relief to your patterns, please note : the beige background may modify the final appearance.

Technical properties



Flame retardant



Thermal

Applications Roman blinds - Panel curtains - Curtains

Composition Polyester enduction acrylique

Weight 380 g/m²

Width 280 cm

Fabric direction Room High Direction

Fitting ↔ 0,0 cm ↓ 0,0 cm

Maintenance advice

Label

Minimum order 25 linear(s) metter(s)

Technical characteristics

Flame retardant

B1 / IMO PASS

Optical index

Light reflexion : **53 %**

Light absorption : **47 %**

Light transmission : **0 %**

Thermal index

Solar reflexion : **64 %**

Solar absorption : **36 %**

Solar transmission : **0 %**

UV transmission : **0 %**

Gtot : **Gt 36 % Fc 61 %**

Resilience

Lightfastness (units Class/8) **4**

Dimensional Stability (%)

Warp **-1**

Weft **-1**

Breaking Elongation

Warp **48**

Weft **72**

Breaking load (daN)

Warp **51**

Weft **84**

Print pattern SALIN



SALIN Abricot 08



SALIN Anis 62



SALIN Fuchsia 33



SALIN Naturel 26



SALIN Orange 15



SALIN Rouge 21



SALIN Turquoise 53



SALIN Vert 24



(Headquarters) SOTEXPRO - 510 route de Montchal - 42360 PANISSIÈRES - FRANCE - +33 4 77 27 60 60

Non-contractual photos and colors - Indicative fitting - Fitting may vary depending on support selected