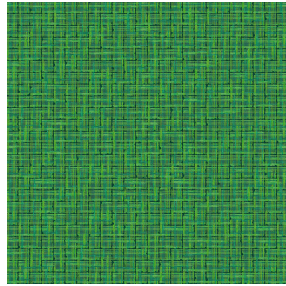




NOCLIN NATUREL 26
Printing support



SALIN Vert 24
Print pattern



Visual not taking into account the printing medium, the final rendering may vary according to the chosen medium.

Printing support **NOCLIN NATUREL 26**

Print pattern **SALIN Vert 24**

Blackout double-side, linen and textured effect, the Noclin is also available as a printing support, to bring depth and relief to your patterns, please note : the beige background may modify the final appearance.

Technical properties



Flame retardant



Thermal

Applications Roman blinds - Panel curtains - Curtains

Composition Polyester enduction acrylique

Weight 380 g/m²

Width 280 cm

Fabric direction Room High Direction

Fitting ↔ 0,0 cm ↓ 0,0 cm

Maintenance advice    

Label

Minimum order 25 linear(s) metter(s)

Technical characteristics

Flame retardant

B1 / IMO PASS

Optical index

Light reflexion : 53 %

Light absorption : 47 %

Light transmission : 0 %

Thermal index

Solar reflexion : 64 %

Solar absorption : 36 %

Solar transmission : 0 %

UV transmission : 0 %

Gtot : **Gt 36 % Fc 61 %**

Resilience

Lightfastness (units Class/8) 4

Dimensional Stability (%)

Warp -1

Weft -1

Breaking Elongation

Warp 48

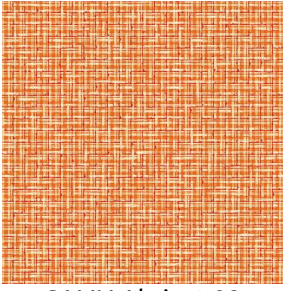
Weft 72

Breaking load (daN)

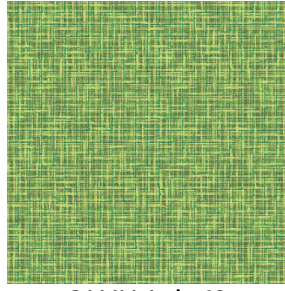
Warp 51

Weft 84

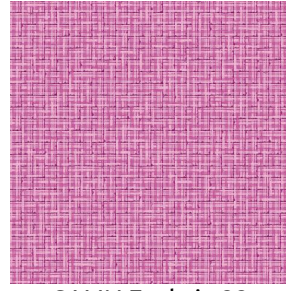
Print pattern SALIN



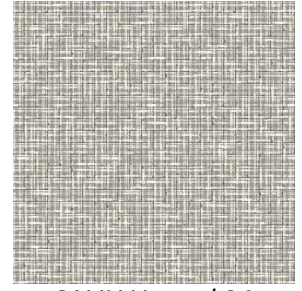
SALIN Abricot 08



SALIN Anis 62



SALIN Fuchsia 33



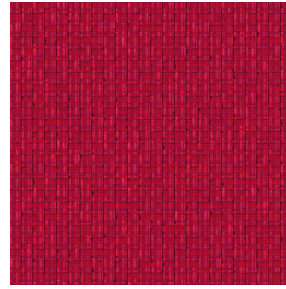
SALIN Naturel 26



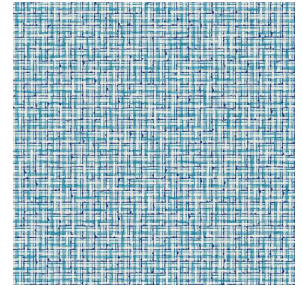
SALIN Océan 91



SALIN Orange 15



SALIN Rouge 21



SALIN Turquoise 53



(Headquarters) SOTEXPRO - 510 route de Montchal - 42360 PANISSIÈRES - FRANCE - +33 4 77 27 60 60

Non-contractual photos and colors - Indicative fitting - Fitting may vary depending on support selected