

NOCLIN NATUREL 26
Printing support



ODE Fuchsia 33
Print pattern



Visual not taking into account the printing medium, the final rendering may vary according to the chosen medium.

Printing support **NOCLIN NATUREL 26**

Print pattern **ODE Fuchsia 33**

Blackout double-side, linen and textured effect, the Noclin is also available as a printing support, to bring depth and relief to your patterns, please note : the beige background may modify the final appearance.

Technical properties



Flame retardant



Thermal

Applications Roman blinds - Panel curtains - Curtains

Composition Polyester enduction acrylique

Weight 380 g/m²

Width 280 cm

Fabric direction Room High Direction

Fitting ↔ 50.0 cm ↓ 50.0 cm

Maintenance advice    

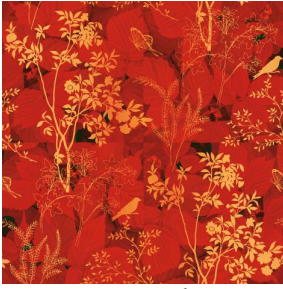
Label

Minimum order 25 linear(s) metter(s)

Technical characteristics

Flame retardant	B1 / IMO PASS	
Optical index	Light reflexion :	53 %
	Light absorption :	47 %
	Light transmission :	0 %
Thermal index	Solar reflexion :	64 %
	Solar absorption :	36 %
	Solar transmission :	0 %
	UV transmission :	0 %
	Gtot :	Gt 36 % Fc 61 %
	Resilience	Lightfastness (units Class/8) 4
	Dimentional Stability (%)	
	Warp	-1
	Weft	-1
	Breaking Elongation	
	Warp	48
	Weft	72
	Breaking load (daN)	
	Warp	51
	Weft	84

Print pattern ODE



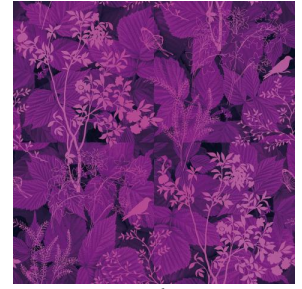
ODE Corail 14



ODE Bleu 41



ODE Turquoise 53



ODE Lilas 19



(Headquarters) SOTEXPRO - 510 route de Montchal - 42360 PANISSIÈRES - FRANCE - +33 4 77 27 60 60

Non-contractual photos and colors - Indicative fitting - Fitting may vary depending on support selected